



District Choral Festival Sightreading

2007-2008

**JH/MS COMPOSER:
THOMAS STOKES**

**HS COMPOSERS:
KENNETH GALBREATH
TOM PECK
LES ROWSEY
THOMAS STOKES
RICHARD WOLF**

Copyright 2008 MSVMA. All rights reserved.

No part of this book may be reproduced in any form or by any means, whether mechanical or electronic, including any form of storage and/or retrieval system, without the express written consent of the Michigan School Vocal Music Association.

CHORAL FESTIVAL GENERAL INFORMATION (Source: MSVMA HANDBOOK, on-line)

- When the choir enters the room, the adjudicator will allow the singers to organize in their regular seating arrangement, leaving the sight reading books closed.
- The adjudicator will confirm with the director the level to be read.
- Sight reading exercises will be printed in the appropriate clef for each voice. In the case of unison exercises involving male voices the exercise will be printed in both clefs. Each exercise will be eight measures in length. Each ensemble will read three exercises. Exercises #1 and #2 will each be read twice, once with rhythm only and then both melodically and rhythmically. Exercise #3 will be read with both melody and rhythm the first time.
- Directors may discuss all of the exercises at the beginning or each one before it is performed. If all of the instruction and preparation is done at the beginning, a maximum of 12 minutes will be allowed. If instruction is done between each exercise, a maximum of 3 minutes will be allowed for each. These times are given only as guidelines to ensure that sufficient time is allowed for performance and oral critique by the adjudicator. These guidelines assume a 30 minute time allotment for the event.
- Directors may discuss any of the musical elements of the exercise but may not sing, clap, or in any way perform the piece for the students. Directors should be encouraged to choose a tempo at which the group can succeed. Faster is not necessarily better.

GENERAL RULES FOR RHYTHMIC EXERCISES

The director's role after the discussion period is limited to giving tempi and conducting the group. Keeping a steady tempo during the performance is allowable if done by snapping fingers, clapping hands, or tapping the foot. If conducting, the director must use the unit of count and may not show the individual rhythms with his/her arms or hands. **Counting aloud or using any voice produced sound is not allowed.** Oral assists from the director will be evaluated in light of the overall performance.

GENERAL RULES FOR MELODIC EXERCISES

The key may be established by having the students sing a few scales or chord patterns. The director may change the key to best support the vocal abilities of the choir. Intervals contained in the exercise may be sung as long as they are not done in the sequence of the written material. For example, random intervals or patterns such as 1-3-5-3-1, 1-6, 1-4 etc. may be sung by the students in preparation, and directors may call attention to places where these occur in the exercise. They may not, however, be systematically rehearsed in the sequence in which they appear. The group may speak aloud the solfege, letter, or number names preparatory to singing. Singers are also to discuss and/or vocalize with their neighbors during the prep time, as long as the director is not assisting by illustrating intervals or rhythms. The practice of 'neighboring' shall not be a unified effort by a section or group of students larger than three.

PERFORMANCE INSTRUCTIONS

1. First Exercise - Unison - Rhythm Only - Perform the rhythm of the first exercise. It may be sung on a neutral syllable, with *solfege* names, letter names or numbers, using a single note or a chord, or it may be clapped. Directors may not illustrate rhythm patterns to the group.
2. First Exercise - Unison - Rhythm and Melody - Perform the unison exercise as is, i.e. rhythmically and melodically, using *solfege* (fixed or movable "Do"), letter names, numbers, or a neutral syllable.
3. Second Exercise - Two-part (one part will be identical to the unison exercise) - Perform only the rhythm of the starred line of the second exercise.
4. Second Exercise - Two-part - Perform as is, i.e. as a two-part piece, rhythmically and melodically, using *solfege* (fixed or movable "Do"), letter names, numbers, or a neutral syllable. Unison choirs will be asked to do the line with the new musical material.
5. Third Exercise - Perform the three- or four-part exercise as is; directors of mixed groups may choose either the SAB or SATB selection, based on the performance nature of their groups. If the baritone range of the SAB exercise is too wide, directors may choose to read the SAT of the four-part exercise instead. Note: A group which performs a four-part piece as its required selection must sight read the four-part exercise, depending upon the voicing of their required performance selection. All unison exercises are written separately.

INDEX

JUNIOR HIGH/MIDDLE SCHOOL:

PRIMARY EXERCISES

UNISON- P. 3
TWO-PART- P. 4
SSA- P. 5
TBB/TTB- P. 6
SAB- P. 7
SATB- P. 8

INTERMEDIATE EXERCISES

UNISON- P. 9
TWO-PART- P. 10
SSA- P. 11
TBB/TTB- P. 12
SAB- P. 13
SATB- P. 14

ADVANCED EXERCISES

UNISON- P. 15
TWO-PART- P. 16
SSA- P. 17
TBB/TTB- P. 18
SAB- P. 19
SATB- P. 20

HIGH SCHOOL

PRIMARY EXERCISES

UNISON- p. 21
TWO-PART- p. 22
SSA- p. 23
TBB/TTB- p. 24
TTBB- p. 25
SAB- p. 26
SATB- p. 27

INTERMEDIATE EXERCISES

UNISON- p. 28
TWO-PART- p. 29
SSA- p. 30
TBB/TTB- p. 31
TTBB- p. 32
SAB- p. 33
SATB- p. 34

ADVANCED EXERCISES

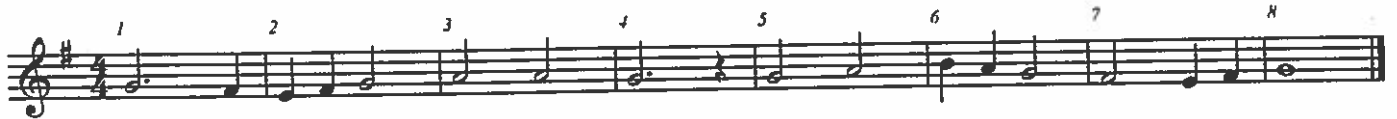
UNISON- p. 35
TWO-PART- p. 36
SSA- p. 37
TBB/TTB- p. 38
TTBB- p. 39
SAB- p. 40
SATB- p. 41

MS/JH UNISON Primary

Perform rhythm first, then perform melody



Perform rhythm first, then perform melody



Perform melody only



MS/JH Two-Part Primary

UNISON

May do any of these combinations of two parts: SA, TB, SB

Musical notation for the Unison section, consisting of two staves (treble and bass clef) in G major and 4/4 time. The melody is written on the treble staff, and the bass line is on the bass staff. The piece consists of 8 measures, with measure numbers 1 through 8 indicated above the notes.

TWO-PART

Musical notation for the first Two-Part section, consisting of two staves (treble and bass clef) in G major and 4/4 time. The melody is written on the treble staff, and the bass line is on the bass staff. The piece consists of 8 measures, with measure numbers 1 through 8 indicated above the notes.

Musical notation for the second Two-Part section, consisting of two staves (treble and bass clef) in G major and 4/4 time. The melody is written on the treble staff, and the bass line is on the bass staff. The piece consists of 8 measures, with measure numbers 1 through 8 indicated above the notes. An asterisk (*) is placed to the left of the first measure of the treble staff.

TWO-PART

Musical notation for the third Two-Part section, consisting of two staves (treble and bass clef) in G major and 4/4 time. The melody is written on the treble staff, and the bass line is on the bass staff. The piece consists of 8 measures, with measure numbers 1 through 8 indicated above the notes.

Musical notation for the fourth Two-Part section, consisting of two staves (treble and bass clef) in G major and 4/4 time. The melody is written on the treble staff, and the bass line is on the bass staff. The piece consists of 8 measures, with measure numbers 1 through 8 indicated above the notes.

MS/JH SSA Primary

UNISON

Two staves of musical notation for a unison part. The music is in 4/4 time and B-flat major. The melody consists of quarter notes and eighth notes. The first staff starts with a treble clef and a key signature of one flat. The second staff is identical to the first. Both staves are numbered 1 through 8 above the notes.

TWO-PART

Two staves of musical notation for a two-part setting. The music is in 4/4 time and B-flat major. The first staff is identical to the unison part. The second staff, marked with an asterisk (*), provides a different melodic line. Both staves are numbered 1 through 8 above the notes.

THREE-PART

Three staves of musical notation for a three-part setting. The music is in 4/4 time and B-flat major. Each of the three staves provides a different melodic line. All staves are numbered 1 through 8 above the notes.

MS/JH TTB/TBB Primary

UNISON

Musical notation for the Unison part, consisting of two staves (treble and bass clef) in 4/4 time. The melody is written in a single line across both staves, with measures numbered 1 through 8. The key signature has one flat (Bb).

TWO-PART

Musical notation for the Two-Part part, consisting of two staves (treble and bass clef) in 4/4 time. The melody is written in two lines, with measures numbered 1 through 8. The key signature has one flat (Bb). A small asterisk (*) is placed to the left of the second staff.

THREE-PART (middle part may sing either T2 or B1)

Musical notation for the Three-Part part, consisting of four staves (two treble clefs and two bass clefs) in 4/4 time. The melody is written in four lines, with measures numbered 1 through 8. The key signature has one flat (Bb).

MS/JH SAB Primary

UNISON

Musical notation for Unison SAB Primary, consisting of two staves (treble and bass clef) in 4/4 time. The melody is written in G major. The notes are: 1. G4, 2. A4, 3. B4, 4. C5, 5. B4, 6. A4, 7. G4, 8. G4. The bass line consists of whole notes: 1. G2, 2. A2, 3. B2, 4. C3, 5. B2, 6. A2, 7. G2, 8. G2.

TWO-PART

Musical notation for Two-Part SAB Primary, consisting of two staves (treble and bass clef) in 4/4 time. The melody is written in G major. The notes are: 1. G4, 2. A4, 3. B4, 4. C5, 5. B4, 6. A4, 7. G4, 8. G4. The bass line consists of whole notes: 1. G2, 2. A2, 3. B2, 4. C3, 5. B2, 6. A2, 7. G2, 8. G2.

THREE-PART

Musical notation for Three-Part SAB Primary, consisting of three staves (two treble clefs and one bass clef) in 4/4 time. The melody is written in G major. The notes are: 1. G4, 2. A4, 3. B4, 4. C5, 5. B4, 6. A4, 7. G4, 8. G4. The bass line consists of whole notes: 1. G2, 2. A2, 3. B2, 4. C3, 5. B2, 6. A2, 7. G2, 8. G2.

MS/JH SATB Primary

UNISON

Musical notation for the Unison part, consisting of two staves (treble and bass clef) in 4/4 time. The melody is written in the treble clef and the bass line in the bass clef. The piece is in a key with one flat (B-flat major or D minor). The melody consists of eight measures, with notes numbered 1 through 8. The notes are: 1. G4, 2. A4, 3. Bb4, 4. A4, 5. G4, 6. F4, 7. E4, 8. D4. The bass line consists of eight measures, with notes numbered 1 through 8. The notes are: 1. D3, 2. E3, 3. F3, 4. G3, 5. A3, 6. Bb3, 7. A3, 8. G3.

TWO-PART

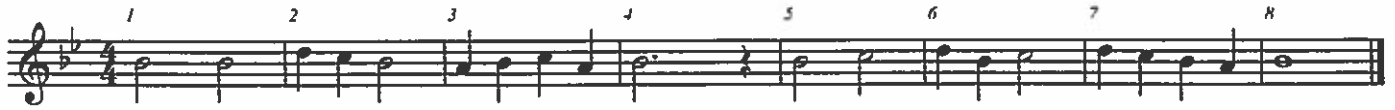
Musical notation for the Two-Part part, consisting of two staves (treble and bass clef) in 4/4 time. The melody is written in the treble clef and the bass line in the bass clef. The piece is in a key with one flat (B-flat major or D minor). The melody consists of eight measures, with notes numbered 1 through 8. The notes are: 1. G4, 2. A4, 3. Bb4, 4. A4, 5. G4, 6. F4, 7. E4, 8. D4. The bass line consists of eight measures, with notes numbered 1 through 8. The notes are: 1. D3, 2. E3, 3. F3, 4. G3, 5. A3, 6. Bb3, 7. A3, 8. G3.

FOUR-PART

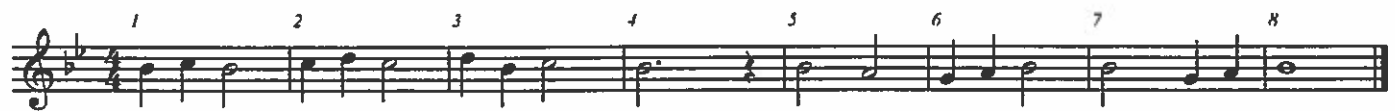
Musical notation for the Four-Part part, consisting of four staves (two treble clefs and two bass clefs) in 4/4 time. The melody is written in the top treble clef and the bass line in the bottom bass clef. The piece is in a key with one flat (B-flat major or D minor). The melody consists of eight measures, with notes numbered 1 through 8. The notes are: 1. G4, 2. A4, 3. Bb4, 4. A4, 5. G4, 6. F4, 7. E4, 8. D4. The bass line consists of eight measures, with notes numbered 1 through 8. The notes are: 1. D3, 2. E3, 3. F3, 4. G3, 5. A3, 6. Bb3, 7. A3, 8. G3.

MS/JH UNISON Intermediate

Perform rhythm first, then perform melody



Perform rhythm first, then perform melody



Perform melody only



MS/JH Two-Part Intermediate

May do any of these combinations of two parts: SA, TB, SB

UNISON

1

2

Musical notation for Unison section, parts 1 and 2. Part 1 is on a treble clef staff and part 2 is on a bass clef staff. Both parts are in 4/4 time and feature a melody with eighth and quarter notes. The key signature has two flats (B-flat and E-flat). The melody consists of 8 measures, with measure numbers 1 through 8 indicated above the notes.

TWO-PART

S

A*

T

*B

Musical notation for Two-Part section, parts S and A, T and B. Part S is on a treble clef staff and part A is on a treble clef staff with an asterisk. Part T is on a treble clef staff with an 8va marking, and part B is on a bass clef staff with an asterisk. All parts are in 4/4 time and feature a melody with eighth and quarter notes. The key signature has two flats (B-flat and E-flat). The melody consists of 8 measures, with measure numbers 1 through 8 indicated above the notes.

TWO-PART

S

A

T

B

Musical notation for Two-Part section, parts S and A, T and B. Part S is on a treble clef staff and part A is on a treble clef staff. Part T is on a treble clef staff with an 8va marking, and part B is on a bass clef staff. All parts are in 4/4 time and feature a melody with eighth and quarter notes. The key signature has two flats (B-flat and E-flat). The melody consists of 8 measures, with measure numbers 1 through 8 indicated above the notes.

MS/JH TTB/TBB Intermediate

UNISON

Musical notation for the Unison part, consisting of two staves (treble and bass clef) in 4/4 time. The melody is written in G major. The notes are: 1. G4, 2. A4, 3. B4, 4. C5, 5. B4, 4. C5, 3. B4, 2. A4, 1. G4. The bass line follows the same melody an octave lower.

TWO-PART

Musical notation for the Two-Part part, consisting of two staves (treble and bass clef) in 4/4 time. The melody is written in G major. The notes are: 1. G4, 2. A4, 3. B4, 4. C5, 5. B4, 4. C5, 3. B4, 2. A4, 1. G4. The bass line follows the same melody an octave lower. A small asterisk (*) is placed to the left of the bass staff.

THREE-PART (middle part may sing either T2 or B1)

Musical notation for the Three-Part part, consisting of four staves (two treble clefs and two bass clefs) in 4/4 time. The melody is written in G major. The notes are: 1. G4, 2. A4, 3. B4, 4. C5, 5. B4, 4. C5, 3. B4, 2. A4, 1. G4. The bass line follows the same melody an octave lower.

MS/JH SAB Intermediate

UNISON

Musical notation for the Unison part, consisting of two staves (treble and bass clef) in 4/4 time. The melody is written in a single line across both staves. The notes are: 1 (quarter), 2 (quarter), 3 (quarter), 4 (quarter), 5 (quarter), 6 (quarter), 7 (quarter), 8 (quarter). The piece ends with a double bar line.

TWO-PART

Musical notation for the Two-Part part, consisting of two staves (treble and bass clef) in 4/4 time. The melody is written in a single line across both staves. The notes are: 1 (quarter), 2 (quarter), 3 (quarter), 4 (quarter), 5 (quarter), 6 (quarter), 7 (quarter), 8 (quarter). The piece ends with a double bar line.

THREE-PART

Musical notation for the Three-Part part, consisting of three staves (treble, treble, and bass clef) in 4/4 time. The melody is written in a single line across all three staves. The notes are: 1 (quarter), 2 (quarter), 3 (quarter), 4 (quarter), 5 (quarter), 6 (quarter), 7 (quarter), 8 (quarter). The piece ends with a double bar line.

MS/JH SATB Intermediate

UNISON

Musical notation for the Unison part, consisting of two staves (treble and bass clef) in 4/4 time. The melody is written in a single line across both staves. The notes are: 1. G4, 2. A4, 3. B4, 4. C5, 5. B4, 6. A4, 7. G4, 8. F4. The piece concludes with a double bar line.

TWO-PART

Musical notation for the Two-Part part, consisting of two staves (treble and bass clef) in 4/4 time. The melody is written in two lines. The notes are: 1. G4, 2. A4, 3. B4, 4. C5, 5. B4, 6. A4, 7. G4, 8. F4. The piece concludes with a double bar line.

FOUR-PART

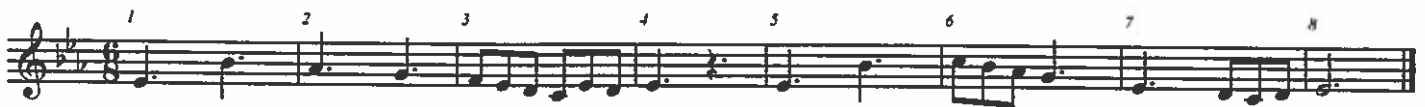
Musical notation for the Four-Part part, consisting of four staves (treble and bass clef) in 4/4 time. The melody is written in four lines. The notes are: 1. G4, 2. A4, 3. B4, 4. C5, 5. B4, 6. A4, 7. G4, 8. F4. The piece concludes with a double bar line.

MS/JH UNISON Advanced

Perform rhythm first, then perform melody



Perform rhythm first, then perform melody



Perform melody only



MS/JH Two-Part Advanced

May do any of these combinations of two parts: SA, TB, SB

UNISON

1 2 3 4 5 6 7 8

TWO-PART

* 1 2 3 4 5 6 7 8

* 1 2 3 4 5 6 7 8

TWO-PART

1 2 3 4 5 6 7 8

1 2 3 4 5 6 7 8

MS/JH SSA Advanced

UNISON

Musical notation for the Unison part, consisting of two staves. The music is in 8/8 time and G major. The notes are: 1. G4, 2. A4, 3. B4, 4. C5, 5. B4, 6. A4, 7. G4, 8. F4. The melody is: G4 (quarter), A4 (quarter), B4 (quarter), C5 (quarter), B4 (quarter), A4 (quarter), G4 (quarter), F4 (quarter).

TWO-PART

Musical notation for the Two-Part part, consisting of two staves. The music is in 8/8 time and G major. The notes are: 1. G4, 2. A4, 3. B4, 4. C5, 5. B4, 6. A4, 7. G4, 8. F4. The melody is: G4 (quarter), A4 (quarter), B4 (quarter), C5 (quarter), B4 (quarter), A4 (quarter), G4 (quarter), F4 (quarter).

THREE-PART

Musical notation for the Three-Part part, consisting of three staves. The music is in 8/8 time and G major. The notes are: 1. G4, 2. A4, 3. B4, 4. C5, 5. B4, 6. A4, 7. G4, 8. F4. The melody is: G4 (quarter), A4 (quarter), B4 (quarter), C5 (quarter), B4 (quarter), A4 (quarter), G4 (quarter), F4 (quarter).

MS/JH TTB/TBB Advanced

UNISON

Musical notation for the Unison part, consisting of a single melodic line with 8 numbered measures. The notation is in 8/8 time and features a mix of eighth and quarter notes.

TWO-PART

Musical notation for the Two-Part part, consisting of two staves with 8 numbered measures each. A small asterisk (*) is placed at the beginning of the first staff. The notation is in 8/8 time and features a mix of eighth and quarter notes.

THREE-PART (middle part may sing either T2 or B1)

Musical notation for the Three-Part part, consisting of four staves with 8 numbered measures each. The notation is in 8/8 time and features a mix of eighth and quarter notes.

MS/JH SAB Advanced

UNISON

Musical notation for the Unison part, consisting of two staves. The top staff is in treble clef and the bottom staff is in bass clef. Both staves are in 8/8 time and have a key signature of one sharp (F#). The music is divided into eight measures, numbered 1 through 8. The melody in the top staff starts on a dotted quarter note, followed by eighth notes and quarter notes. The bass line in the bottom staff provides a steady accompaniment with quarter and eighth notes.

TWO-PART

Musical notation for the Two-Part part, consisting of two staves. The top staff is in treble clef and the bottom staff is in bass clef. Both staves are in 8/8 time and have a key signature of one sharp (F#). The music is divided into eight measures, numbered 1 through 8. The melody in the top staff is similar to the unison part. The bass line in the bottom staff is marked with an asterisk (*) and features a more active accompaniment with eighth and sixteenth notes.

THREE-PART

Musical notation for the Three-Part part, consisting of three staves. The top two staves are in treble clef and the bottom staff is in bass clef. All staves are in 8/8 time and have a key signature of one sharp (F#). The music is divided into eight measures, numbered 1 through 8. The top two staves have a more complex, interlocking melody. The bass line in the bottom staff provides a steady accompaniment with quarter and eighth notes.

MS/JH SATB Advanced

UNISON

Musical notation for the Unison part, consisting of a single staff with 8 measures of music. The notation includes a treble clef, a key signature of two flats (B-flat and E-flat), and a time signature of 8/8. The melody is written in a single line, with measures numbered 1 through 8. The music features a mix of quarter, eighth, and sixteenth notes, with some rests.

TWO-PART

Musical notation for the Two-Part part, consisting of two staves with 8 measures of music. The notation includes a treble clef for the upper staff and a bass clef for the lower staff, with a key signature of two flats and a time signature of 8/8. The music is written in two parts, with measures numbered 1 through 8. A small asterisk (*) is placed to the left of the second staff.

FOUR-PART

Musical notation for the Four-Part part, consisting of four staves with 8 measures of music. The notation includes four staves, with the top three in treble clef and the bottom one in bass clef, all with a key signature of two flats and a time signature of 8/8. The music is written in four parts, with measures numbered 1 through 8.

HIGH SCHOOL UNISON Primary

Perform rhythm first, then perform melody.

Musical notation for the first exercise, showing a treble and bass staff with a 4/4 time signature and a key signature of one sharp (F#). The melody is in the treble staff and the bass line is in the bass staff. The melody consists of quarter notes and eighth notes, with a repeat sign at the end. The bass line consists of quarter notes and eighth notes. The exercise is numbered 1 through 8.

Perform rhythm first, then perform melody.

Musical notation for the second exercise, showing a treble and bass staff with a 4/4 time signature and a key signature of one sharp (F#). The melody is in the treble staff and the bass line is in the bass staff. The melody consists of quarter notes and eighth notes, with a repeat sign at the end. The bass line consists of quarter notes and eighth notes. The exercise is numbered 1 through 8.

Perform melody only.

Musical notation for the third exercise, showing a treble and bass staff with a 4/4 time signature and a key signature of one sharp (F#). The melody is in the treble staff and the bass line is in the bass staff. The melody consists of quarter notes and eighth notes, with a repeat sign at the end. The bass line consists of quarter notes and eighth notes. The exercise is numbered 1 through 8.

High School TWO-PART PRIMARY

May do any of these combinations of two parts: SA, TB, SB, or AT

UNISON (Perform rhythm first, then perform melody)

Musical notation for Unison performance. It consists of two staves, labeled 1 and 2. The top staff (1) is in treble clef with a key signature of one flat (Bb) and a 4/4 time signature. The bottom staff (2) is in bass clef with the same key signature and time signature. The music is divided into eight measures, numbered 1 through 8. The first four measures show a rhythmic pattern of quarter notes and eighth notes. The last four measures show a melodic line with quarter notes and eighth notes.

TWO-PART (Perform rhythm of * line first, then perform melody of both parts)

Musical notation for Two-Part performance. It consists of four staves, labeled 1, *2, 1, and *2. The top two staves (1 and *2) are in treble clef with a key signature of one flat (Bb) and a 4/4 time signature. The bottom two staves (1 and *2) are in bass clef with the same key signature and time signature. The music is divided into eight measures, numbered 1 through 8. The first four measures show a rhythmic pattern of quarter notes and eighth notes. The last four measures show a melodic line with quarter notes and eighth notes.

TWO-PART

Musical notation for Two-Part performance. It consists of four staves, labeled 1, 2, 1, and 2. The top two staves (1 and 2) are in treble clef with a key signature of one flat (Bb) and a 4/4 time signature. The bottom two staves (1 and 2) are in bass clef with the same key signature and time signature. The music is divided into eight measures, numbered 1 through 8. The first four measures show a rhythmic pattern of quarter notes and eighth notes. The last four measures show a melodic line with quarter notes and eighth notes.

High School SSA PRIMARY

UNISON (Perform rhythm first, then perform melody)

Musical notation for Unison performance, showing a single staff with a treble clef and a key signature of two flats (B-flat and E-flat). The melody is written in 4/4 time and consists of eight measures. The notes are: G4 (quarter), A4 (quarter), B4 (quarter), C5 (quarter), B4 (quarter), A4 (quarter), G4 (quarter), F4 (quarter). The first measure is marked with a '1' above the staff, and the subsequent measures are marked with '2' through '8' above the staff.

TWO-PART (Perform rhythm of * line, then perform melody of both parts)

Musical notation for Two-Part performance, showing two staves: Soprano (S) and Alto (*A). Both staves have a treble clef and a key signature of two flats. The Soprano part is marked with a '1' above the first measure and '2' through '8' above the subsequent measures. The Alto part is marked with a '*' above the first measure and '2' through '8' above the subsequent measures. The Soprano part consists of the notes: G4 (quarter), A4 (quarter), B4 (quarter), C5 (quarter), B4 (quarter), A4 (quarter), G4 (quarter), F4 (quarter). The Alto part consists of the notes: G4 (quarter), A4 (quarter), B4 (quarter), C5 (quarter), B4 (quarter), A4 (quarter), G4 (quarter), F4 (quarter).

THREE-PART

Musical notation for Three-Part performance, showing three staves: Soprano (S), Soprano (S), and Alto (A). All staves have a treble clef and a key signature of two flats. The top Soprano part is marked with a '1' above the first measure and '2' through '8' above the subsequent measures. The middle Soprano part is marked with a '1' above the first measure and '2' through '8' above the subsequent measures. The Alto part is marked with a '1' above the first measure and '2' through '8' above the subsequent measures. The top Soprano part consists of the notes: G4 (quarter), A4 (quarter), B4 (quarter), C5 (quarter), B4 (quarter), A4 (quarter), G4 (quarter), F4 (quarter). The middle Soprano part consists of the notes: G4 (quarter), A4 (quarter), B4 (quarter), C5 (quarter), B4 (quarter), A4 (quarter), G4 (quarter), F4 (quarter). The Alto part consists of the notes: G4 (quarter), A4 (quarter), B4 (quarter), C5 (quarter), B4 (quarter), A4 (quarter), G4 (quarter), F4 (quarter).

High School TTB/TBB PRIMARY

UNISON (Perform rhythm first, then perform melody)

Musical notation for Unison performance. The top staff is labeled 'T' and the bottom staff is labeled 'B'. The key signature is two flats (B-flat and E-flat) and the time signature is 4/4. The melody in the top staff is marked with numbers 2 through 8 above the notes. The rhythm in the bottom staff is marked with numbers 2 through 8 above the notes.

TWO-PART (Perform rhythm of * line first, then perform melody of both parts)

Musical notation for Two-Part performance. The top staff is labeled '*T' and the bottom staff is labeled 'B'. The key signature is two flats (B-flat and E-flat) and the time signature is 4/4. The melody in the top staff is marked with numbers 2 through 8 above the notes. The rhythm in the bottom staff is marked with numbers 2 through 8 above the notes.

THREE-PART

Musical notation for Three-Part performance. The top staff is labeled 'T1', the middle staff is labeled 'T2', the bottom-left staff is labeled 'B1', and the bottom-right staff is labeled 'B'. The key signature is two flats (B-flat and E-flat) and the time signature is 4/4. The melody in the top staff is marked with numbers 1 through 8 above the notes. The rhythm in the bottom-left staff is marked with numbers 2 through 8 above the notes.

High School TTBB PRIMARY

UNISON (Perform rhythm first, then perform melody)

Musical notation for Unison performance. The top staff is Treble (T) and the bottom staff is Bass (B). The key signature has one flat (B-flat) and the time signature is 4/4. The music is divided into 8 measures, numbered 1 through 8. Measure 1 starts with a treble clef and a common time signature (C). The melody in the treble staff begins with a quarter note G4, followed by eighth notes A4 and B4, and a quarter note C5. The bass staff begins with a quarter note G2, followed by eighth notes F2 and E2, and a quarter note D2. The melody in the bass staff begins with a quarter note G2, followed by eighth notes F2 and E2, and a quarter note D2. The music concludes with a double bar line.

TWO-PART (Perform rhythm of * line, then perform melody of both parts)

Musical notation for Two-Part performance. The top staff is Treble (T) and the bottom staff is Bass (*B). The key signature has one flat (B-flat) and the time signature is 4/4. The music is divided into 8 measures, numbered 1 through 8. Measure 1 starts with a treble clef and a common time signature (C). The melody in the treble staff begins with a quarter note G4, followed by eighth notes A4 and B4, and a quarter note C5. The bass staff begins with a quarter note G2, followed by eighth notes F2 and E2, and a quarter note D2. The melody in the bass staff begins with a quarter note G2, followed by eighth notes F2 and E2, and a quarter note D2. The music concludes with a double bar line.

FOUR-PART

Musical notation for Four-Part performance. The staves are labeled T1, T2, B1, and B2. The key signature has one flat (B-flat) and the time signature is 4/4. The music is divided into 8 measures, numbered 1 through 8. Measure 1 starts with a treble clef and a common time signature (C). The melody in the T1 staff begins with a quarter note G4, followed by eighth notes A4 and B4, and a quarter note C5. The melody in the T2 staff begins with a quarter note G4, followed by eighth notes A4 and B4, and a quarter note C5. The melody in the B1 staff begins with a quarter note G2, followed by eighth notes F2 and E2, and a quarter note D2. The melody in the B2 staff begins with a quarter note G2, followed by eighth notes F2 and E2, and a quarter note D2. The music concludes with a double bar line.

High School SAB PRIMARY

UNISON (Perform rhythm first, then perform melody)

Musical notation for Unison performance. The score consists of two staves: a treble clef staff and a bass clef staff. The key signature is one sharp (F#) and the time signature is 2/4. The melody in the treble staff is marked with numbers 2 through 8 above the notes. The bass staff provides a rhythmic accompaniment.

TWO-PART (Perform rhythm of * line first, then perform melody of both parts)

Musical notation for Two-Part performance. The score consists of three staves: a treble clef staff labeled '1', a treble clef staff labeled '*2', and a bass clef staff labeled '*2'. The key signature is one sharp (F#) and the time signature is 2/4. The melody in the top staff is marked with numbers 2 through 8 above the notes. The two lower staves provide a rhythmic accompaniment.

THREE-PART

Musical notation for Three-Part performance. The score consists of three staves: a treble clef staff labeled 'S', a treble clef staff labeled 'A', and a bass clef staff labeled 'B'. The key signature is one sharp (F#) and the time signature is 2/4. The melody in the top staff is marked with numbers 2 through 8 above the notes. The two lower staves provide a rhythmic accompaniment.

High School SATB PRIMARY

UNISON (Perform rhythm first, then perform melody)

Musical notation for Unison performance, showing two staves (1 and 2) with numbered measures 2 through 8. The notation is in 4/4 time. Staff 1 is in treble clef and staff 2 is in bass clef. The melody in staff 1 starts on G4 and ends on G4. The bass line in staff 2 starts on G2 and ends on G2. The rhythm is a simple 4-beat pattern: quarter, quarter, quarter, quarter.

TWO-PART (Perform rhythm of * line first, then perform melody of both parts)

Musical notation for Two-Part performance, showing two staves (1 and *2) with numbered measures 2 through 8. The notation is in 4/4 time. Staff 1 is in treble clef and staff *2 is in bass clef. The melody in staff 1 starts on G4 and ends on G4. The bass line in staff *2 starts on G2 and ends on G2. The rhythm is a simple 4-beat pattern: quarter, quarter, quarter, quarter.

FOUR-PART

Musical notation for Four-Part performance, showing four staves (S, A, T, B) with numbered measures 2 through 8. The notation is in 4/4 time. The Soprano (S) staff is in treble clef, the Alto (A) staff is in treble clef with an 8va marking, the Tenor (T) staff is in treble clef with an 8va marking, and the Bass (B) staff is in bass clef. The melody in the Soprano staff starts on G4 and ends on G4. The bass line in the Bass staff starts on G2 and ends on G2. The rhythm is a simple 4-beat pattern: quarter, quarter, quarter, quarter.

HIGH SCHOOL UNISON Intermediate

Perform rhythm first, then perform melody

Musical notation for the first exercise, showing a treble and bass staff with a 3/4 time signature and a key signature of one sharp (F#). The melody in the treble staff is marked with numbers 2 through 8 above the notes. The bass staff provides a rhythmic accompaniment.

Perform rhythm first, then perform melody

Musical notation for the second exercise, showing a treble and bass staff with a 3/4 time signature and a key signature of one sharp (F#). The melody in the treble staff is marked with numbers 2 through 8 above the notes. The bass staff provides a rhythmic accompaniment.

Perform melody only

Musical notation for the third exercise, showing a treble and bass staff with a 3/4 time signature and a key signature of one sharp (F#). The melody in the treble staff is marked with numbers 2 through 8 above the notes. The bass staff provides a rhythmic accompaniment.

High School TWO-PART Intermediate

May do any of these combinations of two parts: SA, TB, SB, or AT

UNISON (Perform rhythm first, then perform melody)

Musical score for UNISON performance. It consists of two staves, labeled 1 and 2. The music is in 4/4 time and B-flat major. The first four measures are a rhythmic exercise, and the last four are a melody. The notes are: 1. G4, A4, Bb4, C5; 2. D5, C5, Bb4, A4; 3. G4, F4, E4, D4; 4. C4, Bb3, A3, G3; 5. F3, E3, D3, C3; 6. Bb2, A2, G2, F2; 7. E2, D2, C2, Bb1; 8. A1, G1, F1, E1.

TWO-PART (Perform rhythm first, then perform melody)

Musical score for TWO-PART performance. It consists of four staves, labeled 1, *2, 1, and *2. The music is in 4/4 time and B-flat major. The first four measures are a rhythmic exercise, and the last four are a melody. The notes are: 1. G4, A4, Bb4, C5; *2. D5, C5, Bb4, A4; 1. G4, F4, E4, D4; *2. C4, Bb3, A3, G3; 1. F3, E3, D3, C3; *2. Bb2, A2, G2, F2; 1. E2, D2, C2, Bb1; *2. A1, G1, F1, E1.

TWO-PART

Musical score for TWO-PART performance. It consists of four staves, labeled 1, 2, 1, and 2. The music is in 4/4 time and B-flat major. The first four measures are a rhythmic exercise, and the last four are a melody. The notes are: 1. G4, A4, Bb4, C5; 2. D5, C5, Bb4, A4; 1. G4, F4, E4, D4; 2. C4, Bb3, A3, G3; 1. F3, E3, D3, C3; 2. Bb2, A2, G2, F2; 1. E2, D2, C2, Bb1; 2. A1, G1, F1, E1.

High School SSA Intermediate

UNISON (Perform rhythm first, then perform melody)

Musical notation for the Unison part, consisting of a single staff in treble clef with a key signature of one sharp (F#) and a 2/4 time signature. The melody is marked with numbers 2 through 8 above the notes. The notes are: 2 (quarter), 3 (quarter), 4 (quarter), 5 (quarter), 6 (quarter), 7 (quarter), 8 (quarter).

TWO-PART (Perform rhythm of * line, then perform melody of both parts)

Musical notation for the Two-Part part, consisting of two staves in treble clef with a key signature of one sharp (F#) and a 2/4 time signature. The top staff is marked with an asterisk (*) and numbers 2 through 8 above the notes. The bottom staff is marked with the number 2. The notes are: 2 (quarter), 3 (quarter), 4 (quarter), 5 (quarter), 6 (quarter), 7 (quarter), 8 (quarter).

THREE-PART

Musical notation for the Three-Part part, consisting of three staves in treble clef with a key signature of one sharp (F#) and a 2/4 time signature. The staves are labeled S, S, and A. The notes are marked with numbers 1 through 8 above the notes. The notes are: 1 (quarter), 2 (quarter), 3 (quarter), 4 (quarter), 5 (quarter), 6 (quarter), 7 (quarter), 8 (quarter).

High School TTB/TBB Intermediate

1

2

3

4

5

6

7

8

TWO-PART (Perform rhythm of * line, then perform melody of both parts)

*1

2

3

4

5

6

7

8

THREE-PART

T1

2

3

4

5

6

7

8

T2

B1

B2

High School TTBB Intermediate

UNISON (Perform rhythm first, then perform melody)

Musical notation for the Unison section, featuring two staves: Treble (T) and Bass (B). The key signature is one sharp (F#) and the time signature is 4/4. The melody is written in the treble clef, and the bass line is in the bass clef. The melody consists of eighth and quarter notes, with measures numbered 1 through 8. The bass line provides a rhythmic accompaniment.

TWO-PART (Perform rhythm of * line first, then perform melody of both parts)

Musical notation for the Two-Part section, featuring two staves: Treble (T) and Bass (*B). The key signature is one sharp (F#) and the time signature is 4/4. The melody is written in the treble clef, and the bass line is in the bass clef. The melody consists of eighth and quarter notes, with measures numbered 1 through 8. The bass line provides a rhythmic accompaniment.

FOUR-PART

Musical notation for the Four-Part section, featuring four staves: Treble 1 (T1), Treble 2 (T2), Bass 1 (B1), and Bass 2 (B2). The key signature is one sharp (F#) and the time signature is 4/4. Each staff contains a different part of the melody, with measures numbered 1 through 8. The parts are arranged in a four-part setting.

High School SAB Intermediate

UNISON (Perform rhythm first, then perform melody)

Musical notation for Unison performance. The score consists of two staves: a treble clef staff and a bass clef staff. The key signature is one sharp (F#) and the time signature is 3/8. The melody in the treble staff is marked with numbers 1 through 8 above the notes. The bass staff provides a rhythmic accompaniment.

TWO-PART (Perform rhythm of * line first, then perform melody of both parts)

Musical notation for Two-Part performance. The score consists of three staves: a treble clef staff labeled *1, a treble clef staff labeled 2, and a bass clef staff labeled 2. The key signature is one sharp (F#) and the time signature is 3/8. The *1 staff has a melody marked with numbers 1 through 8. The other two staves provide rhythmic accompaniment.

THREE-PART

Musical notation for Three-Part performance. The score consists of three staves labeled S, A, and B. The key signature is one sharp (F#) and the time signature is 3/8. The S staff has a melody marked with numbers 1 through 8. The A and B staves provide rhythmic accompaniment.

High School SATB Intermediate

UNISON

Perform rhythm first, then perform melody

Musical notation for the Unison section, consisting of two staves (1 and 2) in 3/8 time. The key signature has one sharp (F#). The melody is written on staff 1, and the bass line is on staff 2. The melody starts with a whole note G4, followed by quarter notes A4, B4, C5, D5, E5, F#5, G5, and a final whole note G5. The bass line starts with a whole note G2, followed by quarter notes A2, B2, C3, D3, E3, F#3, G3, and a final whole note G3. Measure numbers 2 through 8 are indicated above the melody line.

TWO-PART

Perform rhythm of * line first, then perform melody of both parts

Musical notation for the Two-Part section, consisting of two staves (*1 and 2) in 3/8 time. The key signature has one sharp (F#). The melody is written on staff *1, and the bass line is on staff 2. The melody starts with a whole note G4, followed by quarter notes A4, B4, C5, D5, E5, F#5, G5, and a final whole note G5. The bass line starts with a whole note G2, followed by quarter notes A2, B2, C3, D3, E3, F#3, G3, and a final whole note G3. Measure numbers 2 through 8 are indicated above the melody line.

FOUR-PART

Musical notation for the Four-Part section, consisting of four staves (S, A, T, B) in 3/8 time. The key signature has one sharp (F#). The Soprano (S) part starts with a whole note G4, followed by quarter notes A4, B4, C5, D5, E5, F#5, G5, and a final whole note G5. The Alto (A) part starts with a whole note G4, followed by quarter notes A4, B4, C5, D5, E5, F#5, G5, and a final whole note G5. The Tenor (T) part starts with a whole note G3, followed by quarter notes A3, B3, C4, D4, E4, F#4, G4, and a final whole note G4. The Bass (B) part starts with a whole note G2, followed by quarter notes A2, B2, C3, D3, E3, F#3, G3, and a final whole note G3. Measure numbers 2 through 8 are indicated above the Soprano line.

High School Unison Advanced

Perform rhythm first, then perform melody.

Musical notation for the first exercise. The top staff is in treble clef with a key signature of one sharp (F#) and a 4/4 time signature. It contains a melody line with notes numbered 2 through 8. The bottom staff is in bass clef with the same key signature and time signature, containing a corresponding rhythm line. The exercise is enclosed in a large bracket on the left side.

Perform rhythm first, then perform melody.

Musical notation for the second exercise. The top staff is in treble clef with a key signature of one sharp (F#) and a 4/4 time signature. It contains a melody line with notes numbered 2 through 8. The bottom staff is in bass clef with the same key signature and time signature, containing a corresponding rhythm line. The exercise is enclosed in a large bracket on the left side.

Perform melody only.

Musical notation for the third exercise. The top staff is in treble clef with a key signature of one sharp (F#) and a 4/4 time signature. It contains a melody line with notes numbered 2 through 8. The bottom staff is in bass clef with the same key signature and time signature, containing a corresponding rhythm line. The exercise is enclosed in a large bracket on the left side.

High School Two-Part Advanced

May do any of these combinations of two parts: SA, TB, SB, or AT

UNISON (Perform rhythm first, then perform melody)

Musical notation for the Unison section, consisting of two staves (1 and 2) in 4/4 time. The key signature has one sharp (F#). The notation is divided into eight measures, numbered 1 through 8. The first four measures show a rhythmic pattern of eighth and sixteenth notes, followed by a quarter rest in measure 4. The last four measures show a melodic line with eighth and sixteenth notes, ending with a whole note in measure 8.

TWO-PART (Perform rhythm of * line first, then perform melody of both parts)

Musical notation for the Two-Part section, consisting of four staves (1, *2, 1, *2) in 4/4 time. The key signature has one sharp (F#). The notation is divided into eight measures, numbered 1 through 8. The first four measures show a rhythmic pattern of eighth and sixteenth notes, followed by a quarter rest in measure 4. The last four measures show a melodic line with eighth and sixteenth notes, ending with a whole note in measure 8.

TWO-PART

Musical notation for the Two-Part section, consisting of four staves (1, 2, 1, 2) in 4/4 time. The key signature has one sharp (F#). The notation is divided into eight measures, numbered 1 through 8. The first four measures show a rhythmic pattern of eighth and sixteenth notes, followed by a quarter rest in measure 4. The last four measures show a melodic line with eighth and sixteenth notes, ending with a whole note in measure 8.

High School SSA Advanced

UNISON (Perform rhythm first, then perform melody)

Musical notation for Unison performance. The staff is in 4/4 time with a key signature of three flats (B-flat, E-flat, A-flat). The melody consists of eight measures, each marked with a number from 1 to 8 above the staff. The notes are: 1. C4, 2. D4, 3. E4, 4. F4, 5. G4, 6. A4, 7. B4, 8. C5. The rhythm is a steady eighth-note pattern.

TWO-PART (Perform rhythm of * line, then perform melody of both parts)

Musical notation for Two-Part performance. The staff is in 4/4 time with a key signature of three flats. It features two parts: Soprano (*S) and Alto (A). The Soprano part is marked with a '*' and has a rhythm of eighth notes. The Alto part has a melody. Both parts are numbered 1 through 8. The notes for both parts are: 1. C4, 2. D4, 3. E4, 4. F4, 5. G4, 6. A4, 7. B4, 8. C5.

THREE-PART

Musical notation for Three-Part performance. The staff is in 4/4 time with a key signature of three flats. It features three parts: Soprano (S), Soprano (S), and Alto (A). Each part has a unique melody. The parts are numbered 1 through 8. The notes for each part are: 1. C4, 2. D4, 3. E4, 4. F4, 5. G4, 6. A4, 7. B4, 8. C5.

High School TTB/TBB Advanced

UNISON (Perform rhythm first, then perform melody)

Musical notation for Unison section. The top staff is labeled 'T' and the bottom staff is labeled 'B'. The key signature is B-flat major (two flats) and the time signature is 4/4. The music consists of two parts: a rhythm line (marked with numbers 1-8) and a melody line. The rhythm line is a sequence of eighth notes: G4, A4, B4, C5, B4, A4, G4, F4. The melody line is a sequence of quarter notes: G4, A4, B4, C5, B4, A4, G4, F4.

TWO-PART (Perform rhythm of * line first, then perform melody of both parts)

Musical notation for Two-Part section. The top staff is labeled 'T' and the bottom staff is labeled '*B'. The key signature is B-flat major (two flats) and the time signature is 4/4. The music consists of two parts: a rhythm line (marked with numbers 1-8) and a melody line. The rhythm line is a sequence of eighth notes: G4, A4, B4, C5, B4, A4, G4, F4. The melody line is a sequence of quarter notes: G4, A4, B4, C5, B4, A4, G4, F4.

THREE-PART

Musical notation for Three-Part section. The top staff is labeled 'T', the middle staff is labeled 'T2', and the bottom two staves are labeled 'B1' and 'B'. The key signature is B-flat major (two flats) and the time signature is 4/4. The music consists of three parts: a rhythm line (marked with numbers 1-8) and two melody lines. The rhythm line is a sequence of eighth notes: G4, A4, B4, C5, B4, A4, G4, F4. The two melody lines are a sequence of quarter notes: G4, A4, B4, C5, B4, A4, G4, F4.

High School TTBB Advanced

UNISON (Perform rhythm first, then perform melody)

Musical score for Unison performance. The score is written for Tenor (T) and Bass (B) parts. The key signature is two flats (B-flat and E-flat), and the time signature is 3/4. The melody is numbered 1 through 8. The Tenor part starts with a treble clef and a 2-octave range, while the Bass part starts with a bass clef and a 2-octave range. The score is written in a single system with two staves.

TWO-PART (Perform rhythm of * line, then perform melody of both parts)

Musical score for Two-Part performance. The score is written for Tenor (T) and Bass (*B) parts. The key signature is two flats (B-flat and E-flat), and the time signature is 3/4. The melody is numbered 1 through 8. The Tenor part starts with a treble clef and a 2-octave range, while the Bass part starts with a bass clef and a 2-octave range. The score is written in a single system with two staves.

FOUR-PART

Musical score for Four-Part performance. The score is written for four parts: Tenor 1 (T1), Tenor 2 (T2), Bass 1 (B1), and Bass 2 (B2). The key signature is two flats (B-flat and E-flat), and the time signature is 3/4. The melody is numbered 1 through 8. The Tenor parts start with a treble clef and a 2-octave range, while the Bass parts start with a bass clef and a 2-octave range. The score is written in a single system with four staves.

High School SAB Advanced

UNISON (Perform rhythm first, then perform melody)

Musical notation for Unison performance. The top staff is a treble clef with a key signature of one sharp (F#) and a 3/4 time signature. It contains a melody line with notes numbered 2 through 8. The bottom staff is a bass clef with the same key signature and time signature, containing a bass line. The music concludes with a double bar line.

TWO-PART (Perform rhythm of * line first, then perform melody of both parts)

Musical notation for Two-Part performance. The top staff is a treble clef with a key signature of one sharp (F#) and a 3/4 time signature, containing a melody line with notes numbered 2 through 8. The middle and bottom staves are both treble clefs with the same key signature and time signature, containing two different bass lines. The music concludes with a double bar line.

THREE-PART

Musical notation for Three-Part performance. The top staff is labeled 'S' and is a treble clef with a key signature of one sharp (F#) and a 3/4 time signature, containing a melody line with notes numbered 2 through 8. The middle staff is labeled 'A' and is a treble clef with the same key signature and time signature, containing a different melody line. The bottom staff is labeled 'B' and is a bass clef with the same key signature and time signature, containing a bass line. The music concludes with a double bar line.

High School SATB Advanced

UNISON (Perform rhythm first, then perform melody)

Musical notation for the Unison section, consisting of two staves. The top staff is numbered 1 and the bottom staff is numbered 2. The music is in 2/4 time with a key signature of three flats (B-flat, E-flat, A-flat). The melody in the top staff is marked with numbers 1 through 8. The bottom staff provides a rhythmic accompaniment.

TWO-PART (Perform rhythm of * line first, then perform melody of both parts)

Musical notation for the Two-Part section, consisting of four staves labeled S, *A, T, and *B. The music is in 2/4 time with a key signature of three flats. The top staff (S) is marked with numbers 1 through 8. The *A and T staves have a melody, while the *B staff has a rhythmic accompaniment.

FOUR-PART

Musical notation for the Four-Part section, consisting of four staves labeled S, A, T, and B. The music is in 2/4 time with a key signature of three flats. The top staff (S) is marked with numbers 1 through 8. All four staves have distinct melodic lines.