



District Choral Festival Sightreading

2006-2007

**JH/MS COMPOSER:
THOMAS STOKES
TRAVERSE CITY**

**HS COMPOSER:
KENNETH GALBREATH
MT. MORRIS HIGH SCHOOL**

Copyright 2007 MSVMA. All rights reserved.

No part of this book may be reproduced in any form or by any means, whether mechanical or electronic, including any form of storage and/or retrieval system, without the express written consent of the Michigan School Vocal Music Association.

2007 District Choral Sightreading Table of Contents

Middle School/Junior High

Pages 3-20

Primary Exercises

Pages 3-8

Unison	Page 3
Two-Part	Page 4
SSA	Page 5
TTB/TBB	Page 6
SAB	Page 7
SATB	Page 8

Intermediate Exercises

Pages 9-14

Unison	Page 9
Two-Part	Page 10
SSA	Page 11
TTB/TBB	Page 12
SAB	Page 13
SATB	Page 14

Advanced Exercises

Pages 15-20

Unison	Page 15
Two-Part	Page 16
SSA	Page 17
TTB/TBB	Page 18
SAB	Page 19
SATB	Page 20

High School

Pages 21-38

Primary Exercises

Pages 21-26

Two-Part	Page 21
SSA	Page 22
TTB/TBB	Page 23
TTBB	Page 24
SAB	Page 25
SATB	Page 26

Intermediate Exercises

Pages 27-32

Two-Part	Page 27
SSA	Page 28
TTB/TBB	Page 29
TTBB	Page 30
SAB	Page 31
SATB	Page 32

Advanced Exercises

Pages 33-38

Two-Part	Page 33
SSA	Page 34
TTB/TBB	Page 35
TTBB	Page 36
SAB	Page 37
SATB	Page 38

MS/JH UNISON Primary

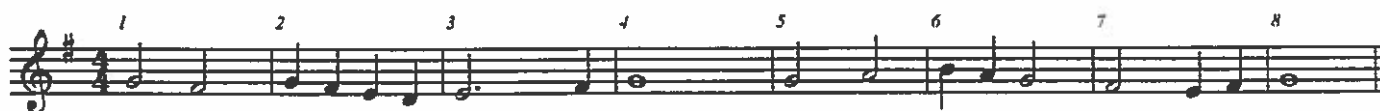
Perform rhythm first, then perform melody



Perform rhythm first, then perform melody



Perform melody only



MS/JH Two-Part Primary

UNISON

Musical notation for the Unison part, consisting of two staves labeled 1 and 2. Both staves are in treble clef with a key signature of one flat (Bb) and a common time signature (C). The music consists of a single melodic line with eight measures, each numbered 1 through 8. The notes are: 1. G4, 2. A4, 3. Bb4, 4. C5, 5. Bb4, 6. A4, 7. G4, 8. F4.

TWO-PART

Musical notation for the Two-Part part, consisting of four staves labeled S, A, T, and B. The Soprano (S) and Tenor (T) parts are in treble clef, and the Alto (A) and Bass (B) parts are in bass clef. The key signature is one flat (Bb) and the time signature is common time (C). The Soprano and Tenor parts have an asterisk (*) above the first measure. The music consists of two parts: the upper part (Soprano and Tenor) and the lower part (Alto and Bass). The upper part has eight measures, each numbered 1 through 8. The notes for the upper part are: 1. G4, 2. A4, 3. Bb4, 4. C5, 5. Bb4, 6. A4, 7. G4, 8. F4. The lower part has eight measures, each numbered 1 through 8. The notes for the lower part are: 1. G3, 2. A3, 3. Bb3, 4. C4, 5. Bb3, 6. A3, 7. G3, 8. F3.

TWO-PART

Musical notation for the second Two-Part part, consisting of four staves labeled S, A, T, and B. The Soprano (S) and Tenor (T) parts are in treble clef, and the Alto (A) and Bass (B) parts are in bass clef. The key signature is one flat (Bb) and the time signature is common time (C). The music consists of two parts: the upper part (Soprano and Tenor) and the lower part (Alto and Bass). The upper part has eight measures, each numbered 1 through 8. The notes for the upper part are: 1. G4, 2. A4, 3. Bb4, 4. C5, 5. Bb4, 6. A4, 7. G4, 8. F4. The lower part has eight measures, each numbered 1 through 8. The notes for the lower part are: 1. G3, 2. A3, 3. Bb3, 4. C4, 5. Bb3, 6. A3, 7. G3, 8. F3.

MS/JH SSA Primary

UNISON

Musical notation for Unison SSA Primary. The score consists of two staves, Soprano (S) and Alto (A), both in treble clef with a key signature of one sharp (F#) and a 4/4 time signature. The melody is written in a single line for both parts. The notes are: 1. G4, 2. A4, 3. B4, 4. C5, 5. B4, 6. A4, 7. G4, 8. F#4. Each note is numbered 1 through 8 above the staff.

TWO-PART

Musical notation for Two-Part SSA Primary. The score consists of two staves, Soprano (S) and Alto (A), both in treble clef with a key signature of one sharp (F#) and a 4/4 time signature. The Soprano part is marked with an asterisk (*). The Soprano melody is: 1. G4, 2. A4, 3. B4, 4. C5, 5. B4, 6. A4, 7. G4, 8. F#4. The Alto melody is: 1. G4, 2. A4, 3. B4, 4. C5, 5. B4, 6. A4, 7. G4, 8. F#4. Each note is numbered 1 through 8 above the staff.

THREE-PART

Musical notation for Three-Part SSA Primary. The score consists of three staves, two Soprano (S) and one Alto (A), all in treble clef with a key signature of one sharp (F#) and a 4/4 time signature. The top Soprano part is: 1. G4, 2. A4, 3. B4, 4. C5, 5. B4, 6. A4, 7. G4, 8. F#4. The middle Soprano part is: 1. G4, 2. A4, 3. B4, 4. C5, 5. B4, 6. A4, 7. G4, 8. F#4. The Alto part is: 1. G4, 2. A4, 3. B4, 4. C5, 5. B4, 6. A4, 7. G4, 8. F#4. Each note is numbered 1 through 8 above the staff.

MS/JH TTB/TBB Primary

UNISON

Musical notation for the Unison part, featuring two staves: Treble (T) and Bass (B). The key signature is one sharp (F#) and the time signature is 4/4. The melody consists of eight measures, with each measure numbered 1 through 8 above the notes. The melody is written in a simple, stepwise fashion, starting on G4 in the treble and F3 in the bass.

TWO-PART

Musical notation for the Two-Part part, featuring two staves: Treble (T) and Bass (B). The key signature is one sharp (F#) and the time signature is 4/4. The melody consists of eight measures, with each measure numbered 1 through 8 above the notes. The Treble part starts with an asterisk (*) above the first measure. The melody is written in a simple, stepwise fashion, starting on G4 in the treble and F3 in the bass.

THREE-PART (middle part may sing either T2 or B1)

Musical notation for the Three-Part part, featuring four staves: Treble (T), Treble 2 (T2), Bass 1 (B1), and Bass (B). The key signature is one sharp (F#) and the time signature is 4/4. The melody consists of eight measures, with each measure numbered 1 through 8 above the notes. The Treble part starts with an asterisk (*) above the first measure. The melody is written in a simple, stepwise fashion, starting on G4 in the treble and F3 in the bass.

MS/JH SAB Primary

UNISON

1 2 3 4 5 6 7 8

1 2 3 4 5 6 7 8

Musical notation for Unison SAB Primary. The score consists of two staves, labeled 1 and 2. Both staves are in 4/4 time and use a key signature of one flat (B-flat). The melody is written on a treble clef staff (1) and the bass line on a bass clef staff (2). The melody consists of eight measures, with a repeat sign at the end. The notes are: 1. G4, A4, B4, C5; 2. D5, C5, B4, A4; 3. G4, F4, E4, D4; 4. C4, B3, A3, G3; 5. F3, E3, D3, C3; 6. B2, A2, G2, F2; 7. E2, D2, C2, B1; 8. A1, G1, F1, E1. The bass line consists of eight measures: 1. G2, F2, E2, D2; 2. C2, B1, A1, G1; 3. F1, E1, D1, C1; 4. B0, A0, G0, F0; 5. E0, D0, C0, B0; 6. A0, G0, F0, E0; 7. D0, C0, B0, A0; 8. G0, F0, E0, D0.

TWO-PART

1 2 3 4 5 6 7 8

1 2 3 4 5 6 7 8

Musical notation for Two-Part SAB Primary. The score consists of two staves, labeled 1 and 2*. Both staves are in 4/4 time and use a key signature of one flat (B-flat). The melody is written on a treble clef staff (1) and the bass line on a bass clef staff (2*). The melody consists of eight measures, with a repeat sign at the end. The notes are: 1. G4, A4, B4, C5; 2. D5, C5, B4, A4; 3. G4, F4, E4, D4; 4. C4, B3, A3, G3; 5. F3, E3, D3, C3; 6. B2, A2, G2, F2; 7. E2, D2, C2, B1; 8. A1, G1, F1, E1. The bass line consists of eight measures: 1. G2, F2, E2, D2; 2. C2, B1, A1, G1; 3. F1, E1, D1, C1; 4. B0, A0, G0, F0; 5. E0, D0, C0, B0; 6. A0, G0, F0, E0; 7. D0, C0, B0, A0; 8. G0, F0, E0, D0.

THREE-PART

S 1 2 3 4 5 6 7 8

A 1 2 3 4 5 6 7 8

B 1 2 3 4 5 6 7 8

Musical notation for Three-Part SAB Primary. The score consists of three staves, labeled S, A, and B. All staves are in 4/4 time and use a key signature of one flat (B-flat). The melody is written on a treble clef staff (S) and the bass line on a bass clef staff (B). The notes are: 1. G4, A4, B4, C5; 2. D5, C5, B4, A4; 3. G4, F4, E4, D4; 4. C4, B3, A3, G3; 5. F3, E3, D3, C3; 6. B2, A2, G2, F2; 7. E2, D2, C2, B1; 8. A1, G1, F1, E1. The bass line consists of eight measures: 1. G2, F2, E2, D2; 2. C2, B1, A1, G1; 3. F1, E1, D1, C1; 4. B0, A0, G0, F0; 5. E0, D0, C0, B0; 6. A0, G0, F0, E0; 7. D0, C0, B0, A0; 8. G0, F0, E0, D0.

MS/JH SATB Primary

UNISON

1 2 3 4 5 6 7 8

1 2 3 4 5 6 7 8

The unison part consists of two staves, labeled 1 and 2. Both staves are in 4/4 time and have a key signature of one sharp (F#). The melody is written on a treble clef for staff 1 and a bass clef for staff 2. The notes are: 1 (quarter), 2 (quarter), 3 (quarter), 4 (quarter), 5 (quarter), 6 (quarter), 7 (quarter), 8 (quarter). The melody is: G4, A4, B4, C5, B4, A4, G4, F#4.

TWO-PART

* 1 2 3 4 5 6 7 8

1 2 3 4 5 6 7 8

The two-part part consists of two staves, labeled 1 and 2. Both staves are in 4/4 time and have a key signature of one sharp (F#). The melody is written on a treble clef for staff 1 and a bass clef for staff 2. The notes are: 1 (quarter), 2 (quarter), 3 (quarter), 4 (quarter), 5 (quarter), 6 (quarter), 7 (quarter), 8 (quarter). The melody is: G4, A4, B4, C5, B4, A4, G4, F#4.

FOUR-PART

S 1 2 3 4 5 6 7 8

A 1 2 3 4 5 6 7 8

T 1 2 3 4 5 6 7 8

B 1 2 3 4 5 6 7 8

The four-part part consists of four staves, labeled S (Soprano), A (Alto), T (Tenor), and B (Bass). All staves are in 4/4 time and have a key signature of one sharp (F#). The melody is written on a treble clef for S, A, and T, and a bass clef for B. The notes are: 1 (quarter), 2 (quarter), 3 (quarter), 4 (quarter), 5 (quarter), 6 (quarter), 7 (quarter), 8 (quarter). The melody is: G4, A4, B4, C5, B4, A4, G4, F#4.

MS/JH UNISON Intermediate

Perform rhythm first, then perform melody

A musical staff in treble clef with a key signature of one sharp (F#) and a 4/4 time signature. The staff contains a sequence of notes and rests. Above the staff, numbers 1 through 8 are placed above the first eight notes, indicating a sequence of eight measures. The notes are: 1. quarter note G4, 2. quarter note A4, 3. quarter note B4, 4. quarter note C5, 5. quarter note B4, 6. quarter note A4, 7. quarter note G4, 8. quarter note F#4. There is a whole rest in the 9th measure, followed by a quarter note G4 in the 10th measure, a quarter note A4 in the 11th measure, a quarter note B4 in the 12th measure, a quarter note C5 in the 13th measure, a quarter note B4 in the 14th measure, a quarter note A4 in the 15th measure, a quarter note G4 in the 16th measure, and a whole note F#4 in the 17th measure.

Perform rhythm first, then perform melody

A musical staff in treble clef with a key signature of one sharp (F#) and a 4/4 time signature. The staff contains a sequence of notes and rests. Above the staff, numbers 1 through 8 are placed above the first eight notes, indicating a sequence of eight measures. The notes are: 1. quarter note G4, 2. quarter note A4, 3. quarter note B4, 4. quarter note C5, 5. quarter note B4, 6. quarter note A4, 7. quarter note G4, 8. quarter note F#4. There is a whole rest in the 9th measure, followed by a quarter note G4 in the 10th measure, a quarter note A4 in the 11th measure, a quarter note B4 in the 12th measure, a quarter note C5 in the 13th measure, a quarter note B4 in the 14th measure, a quarter note A4 in the 15th measure, a quarter note G4 in the 16th measure, and a whole note F#4 in the 17th measure.

Perform melody only

A musical staff in treble clef with a key signature of one sharp (F#) and a 4/4 time signature. The staff contains a sequence of notes and rests. Above the staff, numbers 1 through 8 are placed above the first eight notes, indicating a sequence of eight measures. The notes are: 1. quarter note G4, 2. quarter note A4, 3. quarter note B4, 4. quarter note C5, 5. quarter note B4, 6. quarter note A4, 7. quarter note G4, 8. quarter note F#4. There is a whole rest in the 9th measure, followed by a quarter note G4 in the 10th measure, a quarter note A4 in the 11th measure, a quarter note B4 in the 12th measure, a quarter note C5 in the 13th measure, a quarter note B4 in the 14th measure, a quarter note A4 in the 15th measure, a quarter note G4 in the 16th measure, and a whole note F#4 in the 17th measure.

MS/JH SA Intermediate

May do any of these combinations of two parts: SA, TB, SB

UNISON

1



2



1 2 3 4 5 6 7 8

1 2 3 4 5 6 7 8

Detailed description: This section contains two staves of music. The top staff is labeled '1' and the bottom staff is labeled '2'. Both staves are in treble clef with a key signature of one sharp (F#) and a common time signature (C). The music consists of a sequence of eighth notes, with a quarter rest on the fourth measure. The notes are: 1. G4, 2. A4, 3. B4, 4. C5, 5. B4, 6. A4, 7. G4, 8. F#4. The bottom staff is an octave lower than the top staff.

TWO-PART

S



A*



T



B*



1 2 3 4 5 6 7 8

1 2 3 4 5 6 7 8

1 2 3 4 5 6 7 8

1 2 3 4 5 6 7 8

Detailed description: This section contains four staves of music. The top two staves are labeled 'S' and 'A*' and are in treble clef. The bottom two staves are labeled 'T' and 'B*' and are in bass clef. All staves have a key signature of one sharp (F#) and a common time signature (C). The music consists of a sequence of eighth notes, with a quarter rest on the fourth measure. The notes are: 1. G4, 2. A4, 3. B4, 4. C5, 5. B4, 6. A4, 7. G4, 8. F#4. The 'S' and 'T' parts are an octave higher than the 'A*' and 'B*' parts.

TWO-PART

S



A



T



B



1 2 3 4 5 6 7 8

1 2 3 4 5 6 7 8

1 2 3 4 5 6 7 8

1 2 3 4 5 6 7 8

Detailed description: This section contains four staves of music. The top two staves are labeled 'S' and 'A' and are in treble clef. The bottom two staves are labeled 'T' and 'B' and are in bass clef. All staves have a key signature of one sharp (F#) and a common time signature (C). The music consists of a sequence of eighth notes, with a quarter rest on the fourth measure. The notes are: 1. G4, 2. A4, 3. B4, 4. C5, 5. B4, 6. A4, 7. G4, 8. F#4. The 'S' and 'T' parts are an octave higher than the 'A' and 'B' parts.

MS/JH SSA Intermediate

UNISON

Musical notation for Unison SSA, Soprano (S) and Alto (A) parts. The key signature is one sharp (F#) and the time signature is 4/4. The melody consists of eight measures, with measure numbers 1 through 8 indicated above the notes. The Soprano part begins with a quarter rest in measure 4, and the Alto part begins with a quarter rest in measure 4.

TWO-PART

Musical notation for Two-Part SSA, Soprano (S) and Alto (A) parts. The key signature is one sharp (F#) and the time signature is 4/4. The Soprano part begins with a quarter rest in measure 4, marked with an asterisk (*). The Alto part begins with a quarter rest in measure 4. Measure numbers 1 through 8 are indicated above the notes.

THREE-PART

Musical notation for Three-Part SSA, Soprano 1 (S), Soprano 2 (S), and Alto (A) parts. The key signature is one sharp (F#) and the time signature is 4/4. Each part begins with a quarter rest in measure 4. Measure numbers 1 through 8 are indicated above the notes.

MS/JH TTB/TBB Intermediate

UNISON

Musical notation for the Unison part, showing Treble (T) and Bass (B) staves. The music is in 4/4 time with a key signature of one sharp (F#). The melody consists of 8 measures, with measure numbers 1 through 8 indicated above the notes. The melody is: G4 (quarter), A4 (quarter), B4 (quarter), C5 (quarter), B4 (quarter), A4 (quarter), G4 (quarter), F#4 (quarter).

TWO-PART

Musical notation for the Two-Part part, showing Treble (T) and Bass (B) staves. The music is in 4/4 time with a key signature of one sharp (F#). The melody consists of 8 measures, with measure numbers 1 through 8 indicated above the notes. The melody is: G4 (quarter), A4 (quarter), B4 (quarter), C5 (quarter), B4 (quarter), A4 (quarter), G4 (quarter), F#4 (quarter).

THREE-PART (middle part may sing either T2 or B1)

Musical notation for the Three-Part part, showing Treble (T), T2, B1, and Bass (B) staves. The music is in 4/4 time with a key signature of one sharp (F#). The melody consists of 8 measures, with measure numbers 1 through 8 indicated above the notes. The melody is: G4 (quarter), A4 (quarter), B4 (quarter), C5 (quarter), B4 (quarter), A4 (quarter), G4 (quarter), F#4 (quarter).

MS/JH SAB Intermediate

UNISON

1 2 3 4 5 6 7 8

1 2 3 4 5 6 7 8

TWO-PART

* 1 2 3 4 5 6 7 8

1 2 3 4 5 6 7 8

THREE-PART

S 1 2 3 4 5 6 7 8

A 1 2 3 4 5 6 7 8

B 1 2 3 4 5 6 7 8

MS/JH SATB Intermediate

UNISON

1 2 3 4 5 6 7 8

1 2 3 4 5 6 7 8

TWO-PART

* 1 2 3 4 5 6 7 8

1 2 3 4 5 6 7 8

FOUR-PART

S 1 2 3 4 5 6 7 8

A 1 2 3 4 5 6 7 8

T 1 2 3 4 5 6 7 8

B 1 2 3 4 5 6 7 8

MS/JH UNISON Advanced

Perform rhythm first, then perform melody



Perform rhythm first, then perform melody



Perform melody only



MS/JH SA Advanced

UNISON

May do any of these combinations of two parts: SA, TB, SB

Musical notation for the Unison section, consisting of two parts (1 and 2) in a single system. The key signature is one sharp (F#) and the time signature is 8/8. Part 1 is on a treble clef staff and Part 2 is on a bass clef staff. Both parts feature a sequence of eight measures, with measure numbers 1 through 8 indicated above the notes. The melody in Part 1 starts on G4 and moves through A4, B4, C5, B4, A4, G4, F#4, and E4. The bass line in Part 2 starts on G2 and moves through A2, B2, C3, D3, E3, F#3, G3, and A3.

TWO-PART

Musical notation for the Two-Part section, consisting of two systems. The first system has Soprano (S) and Alto (A) parts, and the second system has Tenor (T) and Bass (B) parts. The key signature is one sharp (F#) and the time signature is 8/8. Each part has eight measures, with measure numbers 1 through 8 indicated above the notes. The Soprano and Tenor parts have the same melody as Part 1 in the Unison section. The Alto and Bass parts have the same bass line as Part 2 in the Unison section.

TWO-PART

Musical notation for the second Two-Part section, consisting of two systems. The first system has Soprano (S) and Alto (A) parts, and the second system has Tenor (T) and Bass (B) parts. The key signature is one sharp (F#) and the time signature is 8/8. Each part has eight measures, with measure numbers 1 through 8 indicated above the notes. The Soprano and Tenor parts have the same melody as Part 1 in the Unison section. The Alto and Bass parts have the same bass line as Part 2 in the Unison section.

MS/JH SSA Advanced

UNISON

Musical notation for Unison SSA, Soprano (S) and Alto (A) parts. The key signature is two sharps (F# and C#), and the time signature is 8/8. The music consists of two staves, each with a treble clef. The Soprano part starts on a G4 and the Alto part starts on a G3. Both parts follow the same melodic line, with notes numbered 1 through 8. The notes are: 1. G4, 2. A4, 3. B4, 4. C5, 5. B4, 6. A4, 7. G4, 8. F#4. The piece ends with a double bar line.

TWO-PART

Musical notation for Two-Part SSA, Soprano (S) and Alto (A) parts. The key signature is two sharps (F# and C#), and the time signature is 8/8. The Soprano part starts on a G4 and the Alto part starts on a G3. The Soprano part follows the same melodic line as in the Unison section, with notes numbered 1 through 8. The Alto part follows a different melodic line, with notes numbered 1 through 8. The notes for the Alto part are: 1. G3, 2. A3, 3. B3, 4. C4, 5. B3, 6. A3, 7. G3, 8. F#3. The piece ends with a double bar line.

THREE-PART

Musical notation for Three-Part SSA, Soprano 1 (S), Soprano 2 (S), and Alto (A) parts. The key signature is two sharps (F# and C#), and the time signature is 8/8. The Soprano 1 part starts on a G4, the Soprano 2 part starts on a G4, and the Alto part starts on a G3. The Soprano 1 part follows the same melodic line as in the Unison section, with notes numbered 1 through 8. The Soprano 2 part follows a different melodic line, with notes numbered 1 through 8. The notes for the Soprano 2 part are: 1. G4, 2. A4, 3. B4, 4. C5, 5. B4, 6. A4, 7. G4, 8. F#4. The Alto part follows a different melodic line, with notes numbered 1 through 8. The notes for the Alto part are: 1. G3, 2. A3, 3. B3, 4. C4, 5. B3, 6. A3, 7. G3, 8. F#3. The piece ends with a double bar line.

MS/JH TTB/TBB Advanced

UNISON

Musical notation for the Unison part, consisting of two staves: Treble (T) and Bass (B). The music is in 3/4 time and B-flat major. The melody consists of eight measures, with each measure numbered 1 through 8. The notes are: 1. G4, 2. A4, 3. Bb4, 4. G4, 5. F4, 6. G4, 7. A4, 8. Bb4.

TWO-PART

Musical notation for the Two-Part part, consisting of two staves: Treble (T) and Bass (B). The music is in 3/4 time and B-flat major. The melody consists of eight measures, with each measure numbered 1 through 8. The notes are: 1. G4, 2. A4, 3. Bb4, 4. G4, 5. F4, 6. G4, 7. A4, 8. Bb4. A small asterisk (*) is placed above the first measure of the Treble staff.

THREE-PART (middle part may sing either T2 or B1)

Musical notation for the Three-Part part, consisting of four staves: Treble (T), Treble 2 (T2), Bass 1 (B1), and Bass (B). The music is in 3/4 time and B-flat major. The melody consists of eight measures, with each measure numbered 1 through 8. The notes are: 1. G4, 2. A4, 3. Bb4, 4. G4, 5. F4, 6. G4, 7. A4, 8. Bb4.

MS/JH SAB Advanced

UNISON

Musical notation for the Unison SAB part, consisting of two staves. The top staff is in treble clef and the bottom staff is in bass clef. Both are in the key of D major (two sharps) and 8/8 time. The melody is marked with numbers 1 through 8 above the notes. The piece concludes with a double bar line.

TWO-PART

Musical notation for the Two-Part SAB part, consisting of two staves. The top staff is in treble clef and the bottom staff is in bass clef. Both are in the key of D major (two sharps) and 8/8 time. The melody is marked with numbers 1 through 8 above the notes. The piece concludes with a double bar line.

THREE-PART

Musical notation for the Three-Part SAB part, consisting of three staves labeled S, A, and B. The top staff (Soprano) is in treble clef, the middle staff (Alto) is in treble clef, and the bottom staff (Bass) is in bass clef. All are in the key of D major (two sharps) and 8/8 time. The melody is marked with numbers 1 through 8 above the notes. The piece concludes with a double bar line.

MS/JH SATB Advanced

UNISON

Musical notation for the Unison part, consisting of two staves. The key signature is two sharps (F# and C#), and the time signature is 8/8. The melody is written across both staves, with measures numbered 1 through 8. The notation includes various note values such as quarter, eighth, and sixteenth notes, along with rests.

TWO-PART

Musical notation for the Two-Part part, consisting of two staves. The key signature is two sharps (F# and C#), and the time signature is 8/8. The melody is written across both staves, with measures numbered 1 through 8. The notation includes various note values such as quarter, eighth, and sixteenth notes, along with rests.

FOUR-PART

Musical notation for the Four-Part part, consisting of four staves labeled S (Soprano), A (Alto), T (Tenor), and B (Bass). The key signature is two sharps (F# and C#), and the time signature is 8/8. The melody is written across all four staves, with measures numbered 1 through 8. The notation includes various note values such as quarter, eighth, and sixteenth notes, along with rests.

High School TWO-PART PRIMARY

May do any of these combinations of two parts: SA, TB, SB, or AT

UNISON

1 2 3 4 5 6 7 8

TWO-PART

S 1 2 3 4 5 6 7 8

*A 1 2 3 4 5 6 7 8

T 1 2 3 4 5 6 7 8

*B 1 2 3 4 5 6 7 8

TWO-PART

S 1 2 3 4 5 6 7 8

A 1 2 3 4 5 6 7 8

T 1 2 3 4 5 6 7 8

B 1 2 3 4 5 6 7 8

High School SSA PRIMARY

UNISON

Musical notation for Unison SSA Primary. It consists of two staves, labeled S (Soprano) and A (Alto), both in treble clef. The key signature has one flat (B-flat) and the time signature is 3/4. The melody is an 8-measure phrase with notes numbered 1 through 8. The notes are: 1 (quarter), 2 (quarter), 3 (quarter), 4 (quarter), 5 (quarter), 6 (quarter), 7 (quarter), 8 (quarter).

TWO-PART

Musical notation for Two-Part SSA Primary. It consists of two staves, labeled S (Soprano) and *A (Alto), both in treble clef. The key signature has one flat (B-flat) and the time signature is 3/4. The melody is an 8-measure phrase with notes numbered 1 through 8. The notes are: 1 (quarter), 2 (quarter), 3 (quarter), 4 (quarter), 5 (quarter), 6 (quarter), 7 (quarter), 8 (quarter).

THREE-PART

Musical notation for Three-Part SSA Primary. It consists of three staves, labeled S (Soprano), S (Soprano), and A (Alto), all in treble clef. The key signature has one flat (B-flat) and the time signature is 3/4. The melody is an 8-measure phrase with notes numbered 1 through 8. The notes are: 1 (quarter), 2 (quarter), 3 (quarter), 4 (quarter), 5 (quarter), 6 (quarter), 7 (quarter), 8 (quarter).

High School TTB/TBB PRIMARY

UNISON

Musical notation for the Unison part, consisting of two staves: Treble (T) and Bass (B). The music is in 4/4 time and features a melody with eight numbered measures. The melody starts on a middle C (C4) and ends on a G4. The bass line provides a simple harmonic accompaniment.

TWO-PART

Musical notation for the Two-Part part, consisting of two staves: Treble (T) and Bass (*B). The music is in 4/4 time and features a melody with eight numbered measures. The melody starts on a middle C (C4) and ends on a G4. The bass line provides a simple harmonic accompaniment.

THREE-PART (Middle part may sing either T2 or B1)

Musical notation for the Three-Part part, consisting of four staves: Treble 1 (T1), Treble 2 (T2), Bass 1 (B1), and Bass 2 (B2). The music is in 4/4 time and features a melody with eight numbered measures. The melody starts on a middle C (C4) and ends on a G4. The parts are arranged in a four-part setting, with T1 and T2 in the upper voices and B1 and B2 in the lower voices.

High School TTBB PRIMARY

UNISON

Musical notation for the Unison section. It consists of two staves: Treble (T) and Bass (B). Both staves are in 4/4 time and contain eight measures of music, numbered 1 through 8. The melody is written in a single line for both parts.

TWO-PART

Musical notation for the Two-Part section. It consists of two staves: Treble (*T) and Bass (B). Both staves are in 4/4 time and contain eight measures of music, numbered 1 through 8. The Treble part has a star symbol next to its label.

FOUR-PART

Musical notation for the Four-Part section. It consists of four staves: T1, T2, B1, and B2. All staves are in 4/4 time and contain eight measures of music, numbered 1 through 8. The top two staves (T1 and T2) are in Treble clef, and the bottom two staves (B1 and B2) are in Bass clef.

High School SAB PRIMARY

UNISON

Musical notation for the Unison part, consisting of two staves labeled 1 and 2. The key signature is one sharp (F#) and the time signature is 4/4. The melody is written across both staves, with notes numbered 1 through 8. Staff 1 uses a treble clef and staff 2 uses a bass clef.

TWO-PART

Musical notation for the Two-Part part, consisting of two staves labeled *1 and 2. The key signature is one sharp (F#) and the time signature is 4/4. The melody is written across both staves, with notes numbered 1 through 8. Staff *1 uses a treble clef and staff 2 uses a bass clef.

THREE-PART

Musical notation for the Three-Part part, consisting of three staves labeled S, A, and B. The key signature is one sharp (F#) and the time signature is 4/4. The melody is written across all three staves, with notes numbered 1 through 8. Staves S and A use a treble clef, and staff B uses a bass clef.

High School SATB PRIMARY

UNISON

Musical notation for the Unison setting, consisting of two staves. The top staff is in treble clef and the bottom staff is in bass clef. Both are in the key of D major (one sharp) and 3/4 time. The melody is numbered 1 through 8. The piece concludes with a double bar line.

TWO-PART

Musical notation for the Two-Part setting, consisting of two staves. The top staff is in treble clef and the bottom staff is in bass clef. Both are in the key of D major (one sharp) and 3/4 time. The melody is numbered 1 through 8. The piece concludes with a double bar line.

FOUR-PART

Musical notation for the Four-Part setting, consisting of four staves labeled S (Soprano), A (Alto), T (Tenor), and B (Bass). Each staff is in its respective clef (Soprano and Alto in treble, Tenor and Bass in bass). All are in the key of D major (one sharp) and 3/4 time. The melody is numbered 1 through 8. The piece concludes with a double bar line.

High School TWO-PART INTERMEDIATE

May do any of these combinations of two parts: SA, TB, SB, or AT

UNISON

Musical notation for the Unison part, consisting of two staves (1 and 2) in 8/8 time. The melody is written on a treble clef staff (1) and the bass line on a bass clef staff (2). The key signature has two flats (B-flat and E-flat). The piece consists of 8 measures, with measure numbers 1 through 8 indicated above the notes.

TWO-PART

Musical notation for the first Two-Part section, consisting of four staves labeled S, *A, T, and *B. The Soprano (S) and Tenor (T) parts are on treble clefs, while the Alto (*A) and Bass (*B) parts are on treble clefs. The key signature has two flats. The piece consists of 8 measures, with measure numbers 1 through 8 indicated above the notes.

TWO-PART

Musical notation for the second Two-Part section, consisting of four staves labeled S, A, T, and B. The Soprano (S) and Tenor (T) parts are on treble clefs, while the Alto (A) and Bass (B) parts are on bass clefs. The key signature has two flats. The piece consists of 8 measures, with measure numbers 1 through 8 indicated above the notes.

High School SSA INTERMEDIATE

UNISON

Musical notation for Unison SSA, Soprano (S) and Alto (A) parts. The key signature is two sharps (F# and C#) and the time signature is 4/4. The melody consists of 8 measures, with numbers 1 through 8 indicating the measure number. The Soprano part starts on G4 and the Alto part starts on E3. Both parts follow the same melodic line.

TWO-PART

Musical notation for Two-Part SSA, Soprano (S) and Alto (*A) parts. The key signature is two sharps (F# and C#) and the time signature is 4/4. The melody consists of 8 measures, with numbers 1 through 8 indicating the measure number. The Soprano part starts on G4 and the Alto part starts on E3. The parts are written in different voices to create a two-part setting.

THREE-PART

Musical notation for Three-Part SSA, Soprano 1 (S), Soprano 2 (S), and Alto (A) parts. The key signature is two sharps (F# and C#) and the time signature is 4/4. The melody consists of 8 measures, with numbers 1 through 8 indicating the measure number. The Soprano 1 part starts on G4, the Soprano 2 part starts on E4, and the Alto part starts on E3. The parts are written in different voices to create a three-part setting.

High School TTB/TBB INTERMEDIATE

UNISON

Musical notation for the Unison section, featuring two staves: Tenor (T) and Bass (B). The key signature is one sharp (F#) and the time signature is 4/4. The melody consists of eight measures, with notes numbered 1 through 8. The Tenor staff starts on a G4 and the Bass staff starts on a G2. The melody is: G4 (1), A4 (2), B4 (3), C5 (4), B4 (5), A4 (6), G4 (7), F#4 (8).

TWO-PART

Musical notation for the Two-Part section, featuring two staves: Tenor (T) and Bass (B). The key signature is one sharp (F#) and the time signature is 4/4. The melody consists of eight measures, with notes numbered 1 through 8. The Tenor staff starts on a G4 and the Bass staff starts on a G2. The melody is: G4 (1), A4 (2), B4 (3), C5 (4), B4 (5), A4 (6), G4 (7), F#4 (8).

THREE-PART (Middle part may sing either T2 or B1)

Musical notation for the Three-Part section, featuring four staves: Tenor 1 (T1), Tenor 2 (T2), Bass 1 (B1), and Bass 2 (B2). The key signature is one sharp (F#) and the time signature is 4/4. The melody consists of eight measures, with notes numbered 1 through 8. The Tenor 1 staff starts on a G4, Tenor 2 on a G4, Bass 1 on a G2, and Bass 2 on a G2. The melody is: G4 (1), A4 (2), B4 (3), C5 (4), B4 (5), A4 (6), G4 (7), F#4 (8).

High School TTBB INTERMEDIATE

UNISON

Musical notation for the Unison section. It consists of two staves: Treble (T) and Bass (B). Both staves are in 8/8 time and contain a sequence of 8 notes, numbered 1 through 8. The notes are: 1. quarter, 2. quarter, 3. quarter, 4. quarter, 5. quarter, 6. quarter, 7. quarter, 8. quarter. The melody is: G4, A4, B4, C5, B4, A4, G4, F4. The bass line is: G2, A2, B2, C3, B2, A2, G2, F2.

TWO-PART

Musical notation for the Two-Part section. It consists of two staves: Treble (*T) and Bass (B). Both staves are in 8/8 time and contain a sequence of 8 notes, numbered 1 through 8. The notes are: 1. quarter, 2. quarter, 3. quarter, 4. quarter, 5. quarter, 6. quarter, 7. quarter, 8. quarter. The melody is: G4, A4, B4, C5, B4, A4, G4, F4. The bass line is: G2, A2, B2, C3, B2, A2, G2, F2.

FOUR-PART

Musical notation for the Four-Part section. It consists of four staves: Treble 1 (T1), Treble 2 (T2), Bass 1 (B1), and Bass 2 (B2). All staves are in 8/8 time and contain a sequence of 8 notes, numbered 1 through 8. The notes are: 1. quarter, 2. quarter, 3. quarter, 4. quarter, 5. quarter, 6. quarter, 7. quarter, 8. quarter. The melody is: G4, A4, B4, C5, B4, A4, G4, F4. The bass line is: G2, A2, B2, C3, B2, A2, G2, F2.

High School SAB INTERMEDIATE

UNISON

Two staves of musical notation for a unison section. The top staff is numbered 1 and the bottom staff is numbered 2. Both staves are in the key of D major (two sharps) and 4/4 time. The music consists of eight measures, with each measure containing a single note. The notes are: D4 (quarter), E4 (quarter), F#4 (quarter), G4 (quarter), A4 (quarter), B4 (quarter), C5 (quarter), and D5 (half).

TWO-PART

Two staves of musical notation for a two-part section. The top staff is numbered 1 and the bottom staff is numbered 2. Both staves are in the key of D major (two sharps) and 4/4 time. The music consists of eight measures. The top staff has notes: D4 (quarter), E4 (quarter), F#4 (quarter), G4 (quarter), A4 (quarter), B4 (quarter), C5 (quarter), and D5 (half). The bottom staff has notes: D3 (half), E3 (quarter), F#3 (quarter), G3 (quarter), A3 (quarter), B3 (quarter), C4 (quarter), and D4 (half).

THREE-PART

Three staves of musical notation for a three-part section. The top staff is labeled S, the middle staff is labeled A, and the bottom staff is labeled B. All staves are in the key of D major (two sharps) and 4/4 time. The music consists of eight measures. The S staff has notes: D4 (quarter), E4 (quarter), F#4 (quarter), G4 (quarter), A4 (quarter), B4 (quarter), C5 (quarter), and D5 (half). The A staff has notes: D4 (quarter), E4 (quarter), F#4 (quarter), G4 (quarter), A4 (quarter), B4 (quarter), C5 (quarter), and D5 (half). The B staff has notes: D3 (half), E3 (quarter), F#3 (quarter), G3 (quarter), A3 (quarter), B3 (quarter), C4 (quarter), and D4 (half).

High School SATB INTERMEDIATE

UNISON

Musical notation for the Unison section, consisting of two staves (1 and 2) in 3/4 time with a key signature of two flats. The melody is marked with numbers 1 through 8. Staff 1 is in treble clef and staff 2 is in bass clef. The piece concludes with a double bar line.

TWO-PART

Musical notation for the Two-Part section, consisting of two staves (*1 and 2) in 3/4 time with a key signature of two flats. The melody is marked with numbers 1 through 8. Staff *1 is in treble clef and staff 2 is in bass clef. The piece concludes with a double bar line.

FOUR-PART

Musical notation for the Four-Part section, consisting of four staves (S, A, T, B) in 3/4 time with a key signature of two flats. The melody is marked with numbers 1 through 8. Staves S and A are in treble clef, while T and B are in bass clef. The piece concludes with a double bar line.

High School TWO-PART ADVANCED

May do any of these combinations of two parts: SA, TB, SB, or AT

UNISON

Musical score for Unison, parts 1 and 2. The score is in 4/4 time with a key signature of one sharp (F#). It consists of two staves. Staff 1 (treble clef) and Staff 2 (bass clef) both start with a dynamic marking of *mf*. The music is divided into eight measures, with dynamic markings *mf*, *mp*, and *mf* indicated at measures 1, 4, and 8 respectively. Slurs are placed over measures 3-4 and 7-8.

TWO-PART

Musical score for Two-Part, parts S and *A, and T and *B. The score is in 4/4 time with a key signature of one sharp (F#). It consists of four staves. Staves S and *A (treble clefs) and T and *B (bass clefs) all start with a dynamic marking of *mf*. The music is divided into eight measures, with dynamic markings *mf*, *mp*, and *mf* indicated at measures 1, 4, and 8 respectively. Slurs are placed over measures 3-4 and 7-8.

TWO-PART

Musical score for Two-Part, parts S and A, and T and B. The score is in 4/4 time with a key signature of one sharp (F#). It consists of four staves. Staves S and A (treble clefs) and T and B (bass clefs) all start with a dynamic marking of *mp*. The music is divided into eight measures, with dynamic markings *mp*, *mf*, and *f* indicated at measures 1, 4, and 8 respectively. Slurs are placed over measures 3-4 and 7-8. The final measure (measure 8) includes a *rit.* (ritardando) marking.

High School SSA ADVANCED

UNISON

Adagio

Musical score for Unison, Soprano (S) and Alto (A) parts. The score is in 4/4 time with a key signature of two flats (B-flat and E-flat). The tempo is Adagio. The dynamics are marked as *mp* (mezzo-piano) at the beginning, *mf* (mezzo-forte) at measure 5, and *f* (forte) at measure 8. The score includes a *rit.* (ritardando) marking at measure 7. The melody consists of eighth and quarter notes.

TWO-PART

Musical score for Two-Part, Soprano (*S) and Alto (A) parts. The score is in 4/4 time with a key signature of two flats. The dynamics are marked as *mp* at the beginning, *mf* at measure 5, and *f* at measure 8. The score includes a *rit.* marking at measure 7. The Soprano part has a melodic line with eighth and quarter notes, while the Alto part provides a harmonic accompaniment.

THREE-PART

Musical score for Three-Part, Soprano (S) and Alto (A) parts. The score is in 4/4 time with a key signature of two flats. The dynamics are marked as *mp* at the beginning, *mf* at measure 4, and *rit. mp* at measure 7. The score includes a *rit.* marking at measure 7. The Soprano part has a melodic line with eighth and quarter notes, while the Alto part provides a harmonic accompaniment.

High School TTB/TBB ADVANCED

UNISON

Musical notation for the Unison section, featuring two staves (T and B) in 4/4 time. The melody consists of eight measures. Dynamics include *p*, *poco cres.*, *mp*, and *p*. The key signature has two flats.

TWO-PART

Musical notation for the Two-Part section, featuring two staves (T and *B) in 4/4 time. The melody consists of eight measures. Dynamics include *p*, *poco cres.*, *mp*, and *p*. The key signature has two flats.

THREE-PART (Middle part may sing either T2 or B1)

Musical notation for the Three-Part section, featuring four staves (T1, T2, B1, B2) in 4/4 time. The melody consists of eight measures. Dynamics include *f*, *mf*, *cresc.*, and *f*. The key signature has two flats.

High School TTBB ADVANCED

UNISON

Andante

Musical score for Unison section, featuring two staves (T and B) in 3/4 time. The melody is marked with dynamics *mp* and *mf* and includes crescendo and decrescendo markings. The piece is in a key with two flats and ends with a repeat sign.

TWO-PART

Musical score for Two-Part section, featuring two staves (*T and B) in 3/4 time. The melody is marked with dynamics *mf*, *mp*, and *mf*, and includes a *rit.* marking. The piece is in a key with two flats and ends with a repeat sign.

FOUR-PART

Musical score for Four-Part section, featuring four staves (T1, T2, B1, B2) in 3/4 time. The melody is marked with dynamics *f* and *mf*, and includes crescendo and decrescendo markings. The piece is in a key with two flats and ends with a repeat sign.

High School SAB ADVANCED

UNISON

1 *p* 2 3 *mp* 4 5 6 7 *mf* 8

2 *p* 2 3 *mp* 4 5 6 7 *mf* 8

TWO-PART

1 *p* 2 3 *mp* 4 5 6 7 *mf* 8

*2 *p* 2 3 *mp* 4 5 6 7 *mf* 8

THREE-PART

S *f* 2 3 *mf* 4 5 6 7 *mp* 8

A *f* 2 3 *mf* 4 5 6 7 *mp* 8

B *f* 2 3 *mf* 4 5 6 7 *mp* 8

High School SATB ADVANCED

UNISON

Musical notation for the Unison section, consisting of two staves (1 and 2) in 4/4 time. The key signature has two flats. The music is marked with dynamics: *mf* at the beginning, *dim.* at measure 3, *mp* at measure 4, *cresc.* at measure 7, and *mf* at the end. Measures are numbered 1 through 8.

TWO-PART

Musical notation for the Two-Part section, consisting of two staves (1 and 2) in 4/4 time. The key signature has two flats. The music is marked with dynamics: *mf* at the beginning, *dim.* at measure 3, *mp* at measure 4, *cresc.* at measure 7, and *mf* at the end. Measures are numbered 1 through 8. A star symbol is placed to the left of the second staff.

FOUR-PART

Musical notation for the Four-Part section, consisting of four staves labeled S (Soprano), A (Alto), T (Tenor), and B (Bass) in 4/4 time. The key signature has two flats. The music is marked with dynamics: *f* at the beginning, *mf* at measure 4, and *mf* at measure 6. Measures are numbered 1 through 6. Crescendo hairpins are shown above measures 3 and 4.