



District Choral Festival Sightreading

2005-2006

JH/MS COMPOSER:
THOMAS STOKES
TRAVERSE CITY

HS COMPOSER:
KENNETH GALBREATH
MT. MORRIS HIGH SCHOOL

Copyright 2006 MSVMA. All rights reserved.
No part of this book may be reproduced in any form or by any means, whether mechanical or electronic,
including any form of storage and/or retrieval system, without the express written consent of the
Michigan School Vocal Music Association.

2006 District Choral Sightreading

Table of Contents

Middle School/Junior High

Pages 3- 18

Primary Exercises

Pages 3-8

Unison	Page 3
Two-Part	Page 4
SSA	Page 5
TTB/TBB	Page 6
SAB	Page 7
SATB	Page 8

Intermediate Exercises

Pages 9- 14

Unison	Page 9
Two-Part	Page 10
SSA	Page 11
TTB/TBB	Page 12
SAB	Page 13
SATB	Page 14

Advanced Exercises

Pages 15 - 20

Unison	Page 15
Two-Part	Page 16
SSA	Page 17
TTB/TBB	Page 18
SAB	Page 19
SATB	Page 20

High School

Pages 21-38

Primary Exercises

Pages 21 - 26

Two-Part	Page 21
SSA	Page 22
TTB/TBB	Page 23
TTBB	Page 24
SAB	Page 25
SATB	Page 26

Intermediate Exercises

Pages 27 - 32

Two-Part	Page 27
SSA	Page 28
TTB/TBB	Page 29
TTBB	Page 30
SAB	Page 31
SATB	Page 32

Advanced Exercises


Pages 33 - 38

Two-Part	Page 33
SSA	Page 34
TTB/TBB	Page 35
TTBB	Page 36
SAB	Page 37
SATB	Page 38

MS/JH UNISON Primary

Perform rhythm first, then perform melody

1



Musical notation for exercise 1, featuring a treble clef, a key signature of one flat (Bb), and a 4/4 time signature. The melody consists of eight measures, with numbers 1 through 8 placed above the notes. The notes are: 1. quarter note G4, 2. quarter note A4, 3. quarter note Bb4, 4. quarter note C5, 5. quarter note Bb4, 6. quarter note A4, 7. quarter note G4, 8. quarter note F4. The piece ends with a double bar line.

Perform rhythm first, then perform melody


2



Musical notation for exercise 2, featuring a treble clef, a key signature of one flat (Bb), and a 4/4 time signature. The melody consists of eight measures, with numbers 1 through 8 placed above the notes. The notes are: 1. quarter note G4, 2. quarter note A4, 3. quarter note Bb4, 4. quarter note C5, 5. quarter note Bb4, 6. quarter note A4, 7. quarter note G4, 8. quarter note F4. The piece ends with a double bar line.

Perform melody only

3



Musical notation for exercise 3, featuring a treble clef, a key signature of one flat (Bb), and a 4/4 time signature. The melody consists of eight measures, with numbers 1 through 8 placed above the notes. The notes are: 1. quarter note G4, 2. quarter note A4, 3. quarter note Bb4, 4. quarter note C5, 5. quarter note Bb4, 6. quarter note A4, 7. quarter note G4, 8. quarter note F4. The piece ends with a double bar line.

MS/JH Two-Part Primary

May do any of these combinations of two parts: SA, TB, SB, or AT

UNISON

Musical notation for the Unison section, consisting of two staves labeled 1 and 2. Both staves are in 4/4 time and contain a sequence of notes with numbers 1 through 8 above them, indicating a specific sequence of notes.

TWO-PART

Musical notation for the Two-Part section, consisting of four staves labeled S, A*, T, and B*. Staves S and T are in treble clef, while A* and B* are in bass clef. All are in 4/4 time. Each staff contains a sequence of notes with numbers 1 through 8 above them.

TWO-PART

Musical notation for the second Two-Part section, consisting of four staves labeled S, A, T, and B. Staves S and T are in treble clef, while A and B are in bass clef. All are in 4/4 time. Each staff contains a sequence of notes with numbers 1 through 8 above them.

MS/JH SSA Primary

UNISON

Two staves of musical notation for Unison SSA Primary. The top staff is labeled 'S' and the bottom staff is labeled 'A'. Both staves are in 4/4 time and contain a melody with eight measures, numbered 1 through 8. The melody consists of quarter and eighth notes, with a quarter rest in measure 4.

TWO-PART

Two staves of musical notation for Two-Part SSA Primary. The top staff is labeled 'S*' and the bottom staff is labeled 'A'. Both staves are in 4/4 time and contain a melody with eight measures, numbered 1 through 8. The top staff has a different melody than the bottom staff, with a quarter rest in measure 4.

THREE-PART

Three staves of musical notation for Three-Part SSA Primary. The top two staves are labeled 'S' and the bottom staff is labeled 'A'. All staves are in 4/4 time and contain a melody with eight measures, numbered 1 through 8. The top two staves have different melodies from each other and from the bottom staff, with quarter rests in measure 4.

MS/JH TTB/TBB Primary

Tenor parts written in tenor clef. Directors have discretion to raise or lower the key to fit the voices.
Tenors may sing at the pitch written or an octave above at the director's discretion

UNISON

Musical notation for the Unison part, consisting of two staves: Tenor (T) and Bass (B). Both staves are in 4/4 time and feature a melody with eight numbered measures (1-8) and a final measure marked 'N'. The Tenor staff uses a tenor clef and a key signature of one flat (Bb). The Bass staff uses a bass clef and the same key signature.

TWO-PART

Musical notation for the Two-Part part, consisting of two staves: Tenor (T) and Bass (*B). Both staves are in 4/4 time and feature a melody with eight numbered measures (1-8) and a final measure marked 'N'. The Tenor staff uses a tenor clef and a key signature of one flat (Bb). The Bass staff uses a bass clef and the same key signature.

THREE-PART (middle part may sing either T2 or B1)

Musical notation for the Three-Part part, consisting of four staves: Tenor (T), Tenor 2 (T2), Bass 1 (B1), and Bass (B). All staves are in 4/4 time and feature a melody with eight numbered measures (1-8) and a final measure marked 'N'. The Tenor and Tenor 2 staves use a tenor clef and a key signature of one flat (Bb). The Bass 1 and Bass staves use a bass clef and the same key signature.

MS/JH SAB Primary

UNISON

Musical notation for Unison SAB Primary. It consists of two staves, labeled 1 and 2. Staff 1 is in treble clef and staff 2 is in bass clef. Both are in the key of G major (one sharp) and 4/4 time. The melody consists of eight measures, with numbers 1 through 8 above each measure. The notes are: G4, A4, B4, C5, B4, A4, G4, F4 (Staff 1); G3, A3, B3, C4, B3, A3, G3, F3 (Staff 2).

TWO-PART

Musical notation for Two-Part SAB Primary. It consists of two staves, labeled 1 and 2. Staff 1 is in treble clef and staff 2 is in bass clef. Both are in the key of G major (one sharp) and 4/4 time. The melody consists of eight measures, with numbers 1 through 8 above each measure. The notes are: G4, A4, B4, C5, B4, A4, G4, F4 (Staff 1); G3, A3, B3, C4, B3, A3, G3, F3 (Staff 2).

THREE-PART

Musical notation for Three-Part SAB Primary. It consists of three staves, labeled S, A, and B. Staves S and A are in treble clef, and staff B is in bass clef. All are in the key of G major (one sharp) and 4/4 time. The melody consists of eight measures, with numbers 1 through 8 above each measure. The notes are: G4, A4, B4, C5, B4, A4, G4, F4 (Staff S); G4, A4, B4, C5, B4, A4, G4, F4 (Staff A); G3, A3, B3, C4, B3, A3, G3, F3 (Staff B).

MS/JH SATB Primary

UNISON

1

2

1 2 3 4 5 6 7 8

1 2 3 4 5 6 7 8

TWO-PART

1

2

1 2 3 4 5 6 7 8

* 1 2 3 4 5 6 7 8

FOUR-PART

S

A

T

B

1 2 3 4 5 6 7 8

1 2 3 4 5 6 7 8

1 2 3 4 5 6 7 8

1 2 3 4 5 6 7 8

MS/JH SA Intermediate

May do any of these combinations of two parts: SA, TB, SB or AT

UNISON

Musical notation for Unison, parts 1 and 2. The music is in 3/4 time with a key signature of one sharp (F#). Part 1 is on a treble clef and part 2 is on a bass clef. Both parts play the same melody. The melody consists of quarter notes: G4, A4, B4, C5, D5, E5, F#5, G5, F#5, E5, D5, C5, B4, A4, G4. Measure numbers 1 through 8 are indicated above the notes.

TWO-PART

Musical notation for Two-Part, parts S* and A. The music is in 3/4 time with a key signature of one sharp (F#). Part S* is on a treble clef and part A is on a treble clef. Part S* plays a melody of quarter notes: G4, A4, B4, C5, D5, E5, F#5, G5, F#5, E5, D5, C5, B4, A4, G4. Part A plays a melody of quarter notes: G4, A4, B4, C5, D5, E5, F#5, G5, F#5, E5, D5, C5, B4, A4, G4. Measure numbers 1 through 8 are indicated above the notes.

Musical notation for Two-Part, parts T* and B. The music is in 3/4 time with a key signature of one sharp (F#). Part T* is on a treble clef and part B is on a bass clef. Part T* plays a melody of quarter notes: G4, A4, B4, C5, D5, E5, F#5, G5, F#5, E5, D5, C5, B4, A4, G4. Part B plays a melody of quarter notes: G4, A4, B4, C5, D5, E5, F#5, G5, F#5, E5, D5, C5, B4, A4, G4. Measure numbers 1 through 8 are indicated above the notes.

TWO-PART

Musical notation for Two-Part, parts S and A. The music is in 3/4 time with a key signature of one sharp (F#). Part S is on a treble clef and part A is on a treble clef. Part S plays a melody of quarter notes: G4, A4, B4, C5, D5, E5, F#5, G5, F#5, E5, D5, C5, B4, A4, G4. Part A plays a melody of quarter notes: G4, A4, B4, C5, D5, E5, F#5, G5, F#5, E5, D5, C5, B4, A4, G4. Measure numbers 1 through 8 are indicated above the notes.

Musical notation for Two-Part, parts T and B. The music is in 3/4 time with a key signature of one sharp (F#). Part T is on a treble clef and part B is on a bass clef. Part T plays a melody of quarter notes: G4, A4, B4, C5, D5, E5, F#5, G5, F#5, E5, D5, C5, B4, A4, G4. Part B plays a melody of quarter notes: G4, A4, B4, C5, D5, E5, F#5, G5, F#5, E5, D5, C5, B4, A4, G4. Measure numbers 1 through 8 are indicated above the notes.

MS/JH SSA Intermediate

UNISON

Musical notation for Unison SSA. The Soprano (S) and Alto (A) parts are written on a single staff. The melody consists of eight measures, with notes numbered 1 through 8. The notes are: 1 (quarter), 2 (quarter), 3 (quarter), 4 (quarter), 5 (quarter), 6 (quarter), 7 (quarter), 8 (quarter).

TWO-PART

Musical notation for Two-Part SSA. The Soprano (S) and Alto (A*) parts are written on separate staves. The Soprano part has the same melody as the unison part. The Alto part has a different melody, consisting of eight measures of eighth notes.

THREE-PART

Musical notation for Three-Part SSA. The Soprano (S) and Alto (A) parts are written on separate staves. The Soprano part has the same melody as the unison part. The Alto part has a different melody, consisting of eight measures of eighth notes.

MS/JH TTB/TBB Intermediate

Tenor parts written in tenor clef. Directors have discretion to raise or lower the key to fit the voices.
Tenors may sing at the pitch written or an octave above at the director's discretion

UNISON

Musical notation for the Unison part, featuring two staves: Tenor (T) and Bass (B). The music is in 4/4 time and B-flat major. The Tenor staff uses a tenor clef (C4) and the Bass staff uses a bass clef (C2). The melody consists of 8 measures, with measure numbers 1 through 8 indicated above the notes. The Tenor part starts on G4 and the Bass part starts on G2.

TWO-PART

Musical notation for the Two-Part part, featuring two staves: Tenor (T) and Bass (B). The music is in 4/4 time and B-flat major. The Tenor staff uses a tenor clef (C4) and the Bass staff uses a bass clef (C2). The melody consists of 8 measures, with measure numbers 1 through 8 indicated above the notes. The Tenor part starts on G4 and the Bass part starts on G2.

THREE-PART (middle part may sing either T2 or B1)

Musical notation for the Three-Part part, featuring four staves: Tenor (T), Tenor 2 (T2), Bass 1 (B1), and Bass (B). The music is in 4/4 time and B-flat major. The Tenor staff uses a tenor clef (C4), the Tenor 2 staff uses a tenor clef (C4), the Bass 1 staff uses a bass clef (C2), and the Bass staff uses a bass clef (C2). The melody consists of 8 measures, with measure numbers 1 through 8 indicated above the notes. The Tenor part starts on G4, the Tenor 2 part starts on G4, the Bass 1 part starts on G2, and the Bass part starts on G2.

MS/JH SAB Intermediate

UNISON

Musical notation for the Unison part, consisting of two staves (1 and 2) in 3/4 time with a key signature of one sharp (F#). The melody is: C4, D4, E4, F#4, G4, A4, B4, C5, B4, A4, G4, F#4, E4, D4, C4. The bass line is: C3, D3, E3, F#3, G3, A3, B3, C4, B3, A3, G3, F#3, E3, D3, C3. Measure numbers 1 through 8 are indicated above the notes.

TWO-PART

Musical notation for the Two-Part part, consisting of two staves (1 and 2) in 3/4 time with a key signature of one sharp (F#). The melody is: C4, D4, E4, F#4, G4, A4, B4, C5, B4, A4, G4, F#4, E4, D4, C4. The bass line is: C3, D3, E3, F#3, G3, A3, B3, C4, B3, A3, G3, F#3, E3, D3, C3. Measure numbers 1 through 8 are indicated above the notes. A small asterisk is present at the beginning of the second staff.

THREE-PART

Musical notation for the Three-Part part, consisting of three staves (S, A, B) in 3/4 time with a key signature of one sharp (F#). The melody is: C4, D4, E4, F#4, G4, A4, B4, C5, B4, A4, G4, F#4, E4, D4, C4. The bass line is: C3, D3, E3, F#3, G3, A3, B3, C4, B3, A3, G3, F#3, E3, D3, C3. Measure numbers 1 through 8 are indicated above the notes.

MS/JH SATB Intermediate

UNISON

1 2 3 4 5 6 7 8

1 2 3 4 5 6 7 8

Musical notation for Unison part, showing two staves (1 and 2) with notes and bar numbers 1 through 8. The key signature has two flats and the time signature is 3/4.

TWO-PART

1 2 3 4 5 6 7 8

1 2 3 4 5 6 7 8

Musical notation for Two-Part part, showing two staves (1 and 2) with notes and bar numbers 1 through 8. The key signature has two flats and the time signature is 3/4. A star symbol is present above the first staff.

FOUR-PART

S 1 2 3 4 5 6 7 8

A 1 2 3 4 5 6 7 8

T 1 2 3 4 5 6 7 8

B 1 2 3 4 5 6 7 8

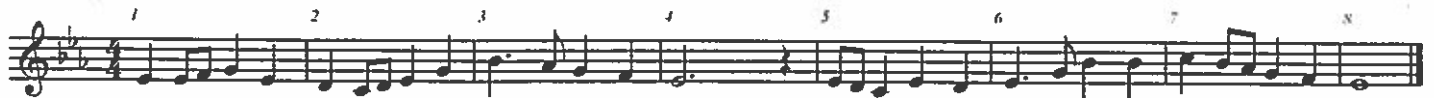
Musical notation for Four-Part part, showing four staves (S, A, T, B) with notes and bar numbers 1 through 8. The key signature has two flats and the time signature is 3/4.

MS/JH UNISON Advanced

Perform rhythm first, then perform melody



Perform rhythm first, then perform melody



Perform melody only



MS/JH Two-Part Advanced

UNISON

May do any of these combinations of two parts: SA, TB, SB, or AT

Musical notation for the Unison section, consisting of two staves labeled 1 and 2. Both staves are in a key signature of one flat (B-flat) and a common time signature (C). The music is written in a single melodic line for each part, with measures numbered 1 through 8. The notation includes various rhythmic values such as quarter, eighth, and sixteenth notes, along with rests.

TWO-PART

Musical notation for the Two-Part section, consisting of four staves labeled S, A, T, and B. The staves are arranged in two pairs: S and A, and T and B. Each pair represents a different voice combination. The key signature is one flat (B-flat) and the time signature is common time (C). The music is written in a single melodic line for each part, with measures numbered 1 through 8. The notation includes various rhythmic values such as quarter, eighth, and sixteenth notes, along with rests.

TWO-PART

Musical notation for the second Two-Part section, consisting of four staves labeled S, A, T, and B. The staves are arranged in two pairs: S and A, and T and B. Each pair represents a different voice combination. The key signature is one flat (B-flat) and the time signature is common time (C). The music is written in a single melodic line for each part, with measures numbered 1 through 8. The notation includes various rhythmic values such as quarter, eighth, and sixteenth notes, along with rests.

MS/JH SSA Advanced

UNISON

Musical notation for the Unison part, featuring Soprano (S) and Alto (A) staves. The music is in 4/4 time and B-flat major. The melody consists of eight measures, with measure numbers 1 through 8 indicated above the notes. The Soprano part starts on G4 and the Alto part starts on E4. Both parts follow the same melodic line: G4, A4, Bb4, C5, Bb4, A4, G4, F4, E4, D4, C4.

TWO-PART

Musical notation for the Two-Part part, featuring Soprano (S) and Alto (A) staves. The music is in 4/4 time and B-flat major. The Soprano part starts on G4 and the Alto part starts on E4. The Soprano part has a melodic line: G4, A4, Bb4, C5, Bb4, A4, G4, F4, E4, D4, C4. The Alto part has a melodic line: E4, F4, G4, A4, Bb4, C5, Bb4, A4, G4, F4, E4, D4, C4. Measure numbers 1 through 8 are indicated above the notes.

THREE-PART

Musical notation for the Three-Part part, featuring Soprano 1 (S), Soprano 2 (S), and Alto (A) staves. The music is in 4/4 time and B-flat major. The Soprano 1 part starts on G4 and the Alto part starts on E4. The Soprano 1 part has a melodic line: G4, A4, Bb4, C5, Bb4, A4, G4, F4, E4, D4, C4. The Soprano 2 part has a melodic line: E4, F4, G4, A4, Bb4, C5, Bb4, A4, G4, F4, E4, D4, C4. The Alto part has a melodic line: E4, F4, G4, A4, Bb4, C5, Bb4, A4, G4, F4, E4, D4, C4. Measure numbers 1 through 8 are indicated above the notes.

MS/JH TTB/TBB Advanced

Tenor parts written in tenor clef. Directors have discretion to raise or lower the key to fit the voices.
Tenors may sing at the pitch written or an octave above at the director's discretion

UNISON

Musical notation for the Unison part, featuring two staves: Tenor (T) and Bass (B). The key signature is one sharp (F#) and the time signature is 4/4. The melody consists of eight measures, with notes numbered 1 through 8. The Tenor staff uses a tenor clef and the Bass staff uses a bass clef.

TWO-PART

Musical notation for the Two-Part part, featuring two staves: Tenor (T) and Bass (B). The key signature is one sharp (F#) and the time signature is 4/4. The melody consists of eight measures, with notes numbered 1 through 8. The Tenor staff uses a tenor clef and the Bass staff uses a bass clef.

THREE-PART (middle part may sing either T2 or B1)

Musical notation for the Three-Part part, featuring four staves: Tenor (T), Tenor 2 (T2), Bass 1 (B1), and Bass (B). The key signature is one sharp (F#) and the time signature is 4/4. The melody consists of eight measures, with notes numbered 1 through 8. The Tenor staff uses a tenor clef, the Tenor 2 staff uses a tenor clef, the Bass 1 staff uses a bass clef, and the Bass staff uses a bass clef.

MS/JH SAB Advanced

UNISON

Musical notation for the Unison part, consisting of two staves (1 and 2) in 3/4 time. The key signature has two flats (B-flat and E-flat). The melody is written on a treble clef staff (1) and a bass clef staff (2). The piece consists of 8 measures, with measure numbers 1 through 8 indicated above the notes. The melody starts on a whole note G3, followed by quarter notes A3, B3, and C4, then a half note D4, and ends with a whole note E4.

TWO-PART

Musical notation for the Two-Part part, consisting of two staves (1 and 2) in 3/4 time. The key signature has two flats (B-flat and E-flat). The melody is written on a treble clef staff (1) and a bass clef staff (2). The piece consists of 8 measures, with measure numbers 1 through 8 indicated above the notes. The melody starts on a whole note G3, followed by quarter notes A3, B3, and C4, then a half note D4, and ends with a whole note E4.

THREE-PART

Musical notation for the Three-Part part, consisting of three staves (S, A, and B) in 3/4 time. The key signature has two flats (B-flat and E-flat). The melody is written on a treble clef staff (S) and a bass clef staff (B). The piece consists of 8 measures, with measure numbers 1 through 8 indicated above the notes. The melody starts on a whole note G3, followed by quarter notes A3, B3, and C4, then a half note D4, and ends with a whole note E4.

MS/JH SATB Advanced

UNISON

1 2 3 4 5 6 7 8

1 2 3 4 5 6 7 8

Musical notation for Unison setting, consisting of two staves (1 and 2) in 4/4 time, G major. The melody is written in treble clef on staff 1 and bass clef on staff 2. The piece consists of 8 measures, with measure numbers 1 through 8 indicated above the notes.

TWO-PART

1 2 3 4 5 6 7 8

1 2 3 4 5 6 7 8

Musical notation for Two-Part setting, consisting of two staves (1 and 2) in 4/4 time, G major. The melody is written in treble clef on staff 1 and bass clef on staff 2. The piece consists of 8 measures, with measure numbers 1 through 8 indicated above the notes.

FOUR-PART

S 1 2 3 4 5 6 7 8

A 1 2 3 4 5 6 7 8

T 1 2 3 4 5 6 7 8

B 1 2 3 4 5 6 7 8

Musical notation for Four-Part setting, consisting of four staves (Soprano, Alto, Tenor, Bass) in 4/4 time, G major. The Soprano, Alto, and Tenor parts are written in treble clef, and the Bass part is written in bass clef. The piece consists of 8 measures, with measure numbers 1 through 8 indicated above the notes.

High School TWO-PART PRIMARY

May do any of these combinations of two parts: SA, TB, SB, or AT

UNISON

1 2 3 4 5 6 7 8

1 2 3 4 5 6 7 8

Musical notation for Unison, parts 1 and 2. Part 1 is in treble clef and part 2 is in bass clef. Both parts are in 4/4 time and consist of eight measures of music. The notes are: 1. C4, D4, E4, F4; 2. G4, A4, B4, C5; 3. B4, A4, G4, F4; 4. E4, D4, C4, B3; 5. A3, G3, F3, E3; 6. D3, C3, B2, A2; 7. G2, F2, E2, D2; 8. C2, B1, A1, G1.

TWO-PART

*S 1 2 3 4 5 6 7 8

A 1 2 3 4 5 6 7 8

*T 1 2 3 4 5 6 7 8

B 1 2 3 4 5 6 7 8

Musical notation for Two-Part, parts *S and A, and T and B. Part *S is in treble clef and part A is in treble clef. Part *T is in treble clef and part B is in bass clef. All parts are in 4/4 time and consist of eight measures of music. The notes are: 1. C4, D4, E4, F4; 2. G4, A4, B4, C5; 3. B4, A4, G4, F4; 4. E4, D4, C4, B3; 5. A3, G3, F3, E3; 6. D3, C3, B2, A2; 7. G2, F2, E2, D2; 8. C2, B1, A1, G1.

TWO-PART

S 1 2 3 4 5 6 7 8

A 1 2 3 4 5 6 7 8

T 1 2 3 4 5 6 7 8

B 1 2 3 4 5 6 7 8

Musical notation for Two-Part, parts S and A, and T and B. Part S is in treble clef and part A is in treble clef. Part T is in treble clef and part B is in bass clef. All parts are in 4/4 time and consist of eight measures of music. The notes are: 1. C4, D4, E4, F4; 2. G4, A4, B4, C5; 3. B4, A4, G4, F4; 4. E4, D4, C4, B3; 5. A3, G3, F3, E3; 6. D3, C3, B2, A2; 7. G2, F2, E2, D2; 8. C2, B1, A1, G1.

High School SSA PRIMARY

UNISON

Musical notation for the Unison section, featuring Soprano (S) and Alto (A) parts. The key signature is one sharp (F#) and the time signature is 3/4. The melody consists of eight measures, with each measure numbered 1 through 8. The Soprano part begins with a half note G4, followed by quarter notes A4, B4, and C5. The Alto part begins with a half note E4, followed by quarter notes F4, G4, and A4. Both parts conclude with a double bar line.

TWO-PART

Musical notation for the Two-Part section, featuring Soprano (S) and Alto (*A) parts. The key signature is one sharp (F#) and the time signature is 3/4. The Soprano part begins with a half note G4, followed by quarter notes A4, B4, and C5. The Alto part begins with a half note E4, followed by quarter notes F4, G4, and A4. Both parts conclude with a double bar line.

THREE-PART

Musical notation for the Three-Part section, featuring Soprano (S) and Alto (A) parts. The key signature is one sharp (F#) and the time signature is 3/4. The Soprano part begins with a half note G4, followed by quarter notes A4, B4, and C5. The Alto part begins with a half note E4, followed by quarter notes F4, G4, and A4. Both parts conclude with a double bar line.

High School TTB/TBB PRIMARY

UNISON

Musical notation for the Unison part, consisting of two staves: Treble (T) and Bass (B). The key signature is one sharp (F#) and the time signature is 3/4. The melody is numbered 1 through 8. The Treble staff starts on a G4 and the Bass staff starts on a G2. The melody consists of eighth and quarter notes with some rests.

TWO-PART

Musical notation for the Two-Part part, consisting of two staves: Treble (*T) and Bass (B). The key signature is one sharp (F#) and the time signature is 3/4. The melody is numbered 1 through 8. The Treble staff starts on a G4 and the Bass staff starts on a G2. The melody consists of eighth and quarter notes with some rests.

THREE-PART (Middle part may sing either T2 or B1)

Musical notation for the Three-Part part, consisting of four staves: Treble 1 (T1), Treble 2 (T2), Bass 1 (B1), and Bass 2 (B2). The key signature is one sharp (F#) and the time signature is 3/4. The melody is numbered 1 through 8. The Treble 1 staff starts on a G4, Treble 2 on a G4, Bass 1 on a G2, and Bass 2 on a G2. The melody consists of eighth and quarter notes with some rests.

High School TTBB PRIMARY

UNISON

Musical notation for the Unison part, consisting of two staves: Treble (T) and Bass (B). The music is in 4/4 time and consists of eight measures. The notes are numbered 1 through 8. The melody is: 1. G4, 2. A4, 3. B4, 4. C5, 5. B4, 4. C5, 3. B4, 2. A4, 1. G4. The bass line is: 1. G2, 2. A2, 3. B2, 4. C3, 5. B2, 4. C3, 3. B2, 2. A2, 1. G2.

TWO-PART

Musical notation for the Two-Part part, consisting of two staves: Treble (T) and Bass (*B). The music is in 4/4 time and consists of eight measures. The notes are numbered 1 through 8. The melody is: 1. G4, 2. A4, 3. B4, 4. C5, 5. B4, 4. C5, 3. B4, 2. A4, 1. G4. The bass line is: 1. G2, 2. A2, 3. B2, 4. C3, 5. B2, 4. C3, 3. B2, 2. A2, 1. G2.

FOUR-PART

Musical notation for the Four-Part part, consisting of four staves: T1, T2, B1, and B2. The music is in 4/4 time and consists of eight measures. The notes are numbered 1 through 8. The melody is: 1. G4, 2. A4, 3. B4, 4. C5, 5. B4, 4. C5, 3. B4, 2. A4, 1. G4. The bass line is: 1. G2, 2. A2, 3. B2, 4. C3, 5. B2, 4. C3, 3. B2, 2. A2, 1. G2.

High School SAB PRIMARY

UNISON

Musical notation for the Unison part, consisting of two staves (1 and 2) in 4/4 time with a key signature of two flats. The melody is marked with numbers 1 through 8. Staff 1 is in treble clef and staff 2 is in bass clef.

TWO-PART

Musical notation for the Two-Part part, consisting of two staves (1 and *2) in 4/4 time with a key signature of two flats. The melody is marked with numbers 1 through 8. Staff 1 is in treble clef and staff 2 is in bass clef.

THREE-PART

Musical notation for the Three-Part part, consisting of three staves (S, A, and B) in 4/4 time with a key signature of two flats. The melody is marked with numbers 1 through 8. Staff S is in treble clef, staff A is in treble clef, and staff B is in bass clef.

High School SATB PRIMARY

UNISON

Musical notation for the Unison part, consisting of two staves. The top staff is in treble clef and the bottom staff is in bass clef. Both are in the key of D major (two sharps) and 4/4 time. The melody is written in a single line across both staves, with measures numbered 1 through 8. The melody consists of quarter and eighth notes, with a final whole note on G4.

TWO-PART

Musical notation for the Two-Part part, consisting of two staves. The top staff is in treble clef and the bottom staff is in bass clef. Both are in the key of D major (two sharps) and 4/4 time. The melody is written in two parts, with measures numbered 1 through 8. The melody consists of quarter and eighth notes, with a final whole note on G4.

FOUR-PART

Musical notation for the Four-Part part, consisting of four staves labeled S (Soprano), A (Alto), T (Tenor), and B (Bass). The top three staves are in treble clef and the bottom staff is in bass clef. All are in the key of D major (two sharps) and 4/4 time. The melody is written in four parts, with measures numbered 1 through 8. The melody consists of quarter and eighth notes, with a final whole note on G4.

High School TWO-PART INTERMEDIATE

May do any of these combinations of two parts: SA, TB, SB, or AT

UNISON

Musical notation for Unison. Two staves, labeled 1 and 2, showing a melody in treble clef and a bass line in bass clef. The key signature is one sharp (F#) and the time signature is 3/4. The melody consists of 8 measures, with notes numbered 1 through 8. The bass line follows the melody in a lower register.

TWO-PART

Musical notation for Two-Part (Soprano and Alto). Two staves, labeled *S and A, showing a melody in treble clef and a bass line in bass clef. The key signature is one sharp (F#) and the time signature is 3/4. The melody consists of 8 measures, with notes numbered 1 through 8. The Soprano part is in a higher register than the Alto part.

Musical notation for Two-Part (Tenor and Bass). Two staves, labeled *T and B, showing a melody in treble clef and a bass line in bass clef. The key signature is one sharp (F#) and the time signature is 3/4. The melody consists of 8 measures, with notes numbered 1 through 8. The Tenor part is in a higher register than the Bass part.

TWO-PART

Musical notation for Two-Part (Soprano and Alto). Two staves, labeled S and A, showing a melody in treble clef and a bass line in bass clef. The key signature is one sharp (F#) and the time signature is 3/4. The melody consists of 8 measures, with notes numbered 1 through 8. The Soprano part is in a higher register than the Alto part.

Musical notation for Two-Part (Tenor and Bass). Two staves, labeled T and B, showing a melody in treble clef and a bass line in bass clef. The key signature is one sharp (F#) and the time signature is 3/4. The melody consists of 8 measures, with notes numbered 1 through 8. The Tenor part is in a higher register than the Bass part.

High School SSA INTERMEDIATE

UNISON

Musical notation for Unison SSA arrangement. The score consists of two staves, labeled S (Soprano) and A (Alto), both in treble clef. The key signature is one sharp (F#) and the time signature is 4/4. The melody is written in a single line for both parts, with measures numbered 1 through 8. The melody begins with a quarter rest in measure 1, followed by quarter notes G4, A4, B4, C5, D5, E5, F#5, G5, A5, B5, C6, D6, E6, F#6, G6, A6, B6, C7, D7, E7, F#7, G7, A7, B7, C8, D8, E8, F#8, G8, A8, B8, C9, D9, E9, F#9, G9, A9, B9, C10, D10, E10, F#10, G10, A10, B10, C11, D11, E11, F#11, G11, A11, B11, C12, D12, E12, F#12, G12, A12, B12, C13, D13, E13, F#13, G13, A13, B13, C14, D14, E14, F#14, G14, A14, B14, C15, D15, E15, F#15, G15, A15, B15, C16, D16, E16, F#16, G16, A16, B16, C17, D17, E17, F#17, G17, A17, B17, C18, D18, E18, F#18, G18, A18, B18, C19, D19, E19, F#19, G19, A19, B19, C20, D20, E20, F#20, G20, A20, B20, C21, D21, E21, F#21, G21, A21, B21, C22, D22, E22, F#22, G22, A22, B22, C23, D23, E23, F#23, G23, A23, B23, C24, D24, E24, F#24, G24, A24, B24, C25, D25, E25, F#25, G25, A25, B25, C26, D26, E26, F#26, G26, A26, B26, C27, D27, E27, F#27, G27, A27, B27, C28, D28, E28, F#28, G28, A28, B28, C29, D29, E29, F#29, G29, A29, B29, C30, D30, E30, F#30, G30, A30, B30, C31, D31, E31, F#31, G31, A31, B31, C32, D32, E32, F#32, G32, A32, B32, C33, D33, E33, F#33, G33, A33, B33, C34, D34, E34, F#34, G34, A34, B34, C35, D35, E35, F#35, G35, A35, B35, C36, D36, E36, F#36, G36, A36, B36, C37, D37, E37, F#37, G37, A37, B37, C38, D38, E38, F#38, G38, A38, B38, C39, D39, E39, F#39, G39, A39, B39, C40, D40, E40, F#40, G40, A40, B40, C41, D41, E41, F#41, G41, A41, B41, C42, D42, E42, F#42, G42, A42, B42, C43, D43, E43, F#43, G43, A43, B43, C44, D44, E44, F#44, G44, A44, B44, C45, D45, E45, F#45, G45, A45, B45, C46, D46, E46, F#46, G46, A46, B46, C47, D47, E47, F#47, G47, A47, B47, C48, D48, E48, F#48, G48, A48, B48, C49, D49, E49, F#49, G49, A49, B49, C50, D50, E50, F#50, G50, A50, B50, C51, D51, E51, F#51, G51, A51, B51, C52, D52, E52, F#52, G52, A52, B52, C53, D53, E53, F#53, G53, A53, B53, C54, D54, E54, F#54, G54, A54, B54, C55, D55, E55, F#55, G55, A55, B55, C56, D56, E56, F#56, G56, A56, B56, C57, D57, E57, F#57, G57, A57, B57, C58, D58, E58, F#58, G58, A58, B58, C59, D59, E59, F#59, G59, A59, B59, C60, D60, E60, F#60, G60, A60, B60, C61, D61, E61, F#61, G61, A61, B61, C62, D62, E62, F#62, G62, A62, B62, C63, D63, E63, F#63, G63, A63, B63, C64, D64, E64, F#64, G64, A64, B64, C65, D65, E65, F#65, G65, A65, B65, C66, D66, E66, F#66, G66, A66, B66, C67, D67, E67, F#67, G67, A67, B67, C68, D68, E68, F#68, G68, A68, B68, C69, D69, E69, F#69, G69, A69, B69, C70, D70, E70, F#70, G70, A70, B70, C71, D71, E71, F#71, G71, A71, B71, C72, D72, E72, F#72, G72, A72, B72, C73, D73, E73, F#73, G73, A73, B73, C74, D74, E74, F#74, G74, A74, B74, C75, D75, E75, F#75, G75, A75, B75, C76, D76, E76, F#76, G76, A76, B76, C77, D77, E77, F#77, G77, A77, B77, C78, D78, E78, F#78, G78, A78, B78, C79, D79, E79, F#79, G79, A79, B79, C80, D80, E80, F#80, G80, A80, B80, C81, D81, E81, F#81, G81, A81, B81, C82, D82, E82, F#82, G82, A82, B82, C83, D83, E83, F#83, G83, A83, B83, C84, D84, E84, F#84, G84, A84, B84, C85, D85, E85, F#85, G85, A85, B85, C86, D86, E86, F#86, G86, A86, B86, C87, D87, E87, F#87, G87, A87, B87, C88, D88, E88, F#88, G88, A88, B88, C89, D89, E89, F#89, G89, A89, B89, C90, D90, E90, F#90, G90, A90, B90, C91, D91, E91, F#91, G91, A91, B91, C92, D92, E92, F#92, G92, A92, B92, C93, D93, E93, F#93, G93, A93, B93, C94, D94, E94, F#94, G94, A94, B94, C95, D95, E95, F#95, G95, A95, B95, C96, D96, E96, F#96, G96, A96, B96, C97, D97, E97, F#97, G97, A97, B97, C98, D98, E98, F#98, G98, A98, B98, C99, D99, E99, F#99, G99, A99, B99, C100, D100, E100, F#100, G100, A100, B100, C101, D101, E101, F#101, G101, A101, B101, C102, D102, E102, F#102, G102, A102, B102, C103, D103, E103, F#103, G103, A103, B103, C104, D104, E104, F#104, G104, A104, B104, C105, D105, E105, F#105, G105, A105, B105, C106, D106, E106, F#106, G106, A106, B106, C107, D107, E107, F#107, G107, A107, B107, C108, D108, E108, F#108, G108, A108, B108, C109, D109, E109, F#109, G109, A109, B109, C110, D110, E110, F#110, G110, A110, B110, C111, D111, E111, F#111, G111, A111, B111, C112, D112, E112, F#112, G112, A112, B112, C113, D113, E113, F#113, G113, A113, B113, C114, D114, E114, F#114, G114, A114, B114, C115, D115, E115, F#115, G115, A115, B115, C116, D116, E116, F#116, G116, A116, B116, C117, D117, E117, F#117, G117, A117, B117, C118, D118, E118, F#118, G118, A118, B118, C119, D119, E119, F#119, G119, A119, B119, C120, D120, E120, F#120, G120, A120, B120, C121, D121, E121, F#121, G121, A121, B121, C122, D122, E122, F#122, G122, A122, B122, C123, D123, E123, F#123, G123, A123, B123, C124, D124, E124, F#124, G124, A124, B124, C125, D125, E125, F#125, G125, A125, B125, C126, D126, E126, F#126, G126, A126, B126, C127, D127, E127, F#127, G127, A127, B127, C128, D128, E128, F#128, G128, A128, B128, C129, D129, E129, F#129, G129, A129, B129, C130, D130, E130, F#130, G130, A130, B130, C131, D131, E131, F#131, G131, A131, B131, C132, D132, E132, F#132, G132, A132, B132, C133, D133, E133, F#133, G133, A133, B133, C134, D134, E134, F#134, G134, A134, B134, C135, D135, E135, F#135, G135, A135, B135, C136, D136, E136, F#136, G136, A136, B136, C137, D137, E137, F#137, G137, A137, B137, C138, D138, E138, F#138, G138, A138, B138, C139, D139, E139, F#139, G139, A139, B139, C140, D140, E140, F#140, G140, A140, B140, C141, D141, E141, F#141, G141, A141, B141, C142, D142, E142, F#142, G142, A142, B142, C143, D143, E143, F#143, G143, A143, B143, C144, D144, E144, F#144, G144, A144, B144, C145, D145, E145, F#145, G145, A145, B145, C146, D146, E146, F#146, G146, A146, B146, C147, D147, E147, F#147, G147, A147, B147, C148, D148, E148, F#148, G148, A148, B148, C149, D149, E149, F#149, G149, A149, B149, C150, D150, E150, F#150, G150, A150, B150, C151, D151, E151, F#151, G151, A151, B151, C152, D152, E152, F#152, G152, A152, B152, C153, D153, E153, F#153, G153, A153, B153, C154, D154, E154, F#154, G154, A154, B154, C155, D155, E155, F#155, G155, A155, B155, C156, D156, E156, F#156, G156, A156, B156, C157, D157, E157, F#157, G157, A157, B157, C158, D158, E158, F#158, G158, A158, B158, C159, D159, E159, F#159, G159, A159, B159, C160, D160, E160, F#160, G160, A160, B160, C161, D161, E161, F#161, G161, A161, B161, C162, D162, E162, F#162, G162, A162, B162, C163, D163, E163, F#163, G163, A163, B163, C164, D164, E164, F#164, G164, A164, B164, C165, D165, E165, F#165, G165, A165, B165, C166, D166, E166, F#166, G166, A166, B166, C167, D167, E167, F#167, G167, A167, B167, C168, D168, E168, F#168, G168, A168, B168, C169, D169, E169, F#169, G169, A169, B169, C170, D170, E170, F#170, G170, A170, B170, C171, D171, E171, F#171, G171, A171, B171, C172, D172, E172, F#172, G172, A172, B172, C173, D173, E173, F#173, G173, A173, B173, C174, D174, E174, F#174, G174, A174, B174, C175, D175, E175, F#175, G175, A175, B175, C176, D176, E176, F#176, G176, A176, B176, C177, D177, E177, F#177, G177, A177, B177, C178, D178, E178, F#178, G178, A178, B178, C179, D179, E179, F#179, G179, A179, B179, C180, D180, E180, F#180, G180, A180, B180, C181, D181, E181, F#181, G181, A181, B181, C182, D182, E182, F#182, G182, A182, B182, C183, D183, E183, F#183, G183, A183, B183, C184, D184, E184, F#184, G184, A184, B184, C185, D185, E185, F#185, G185, A185, B185, C186, D186, E186, F#186, G186, A186, B186, C187, D187, E187, F#187, G187, A187, B187, C188, D188, E188, F#188, G188, A188, B188, C189, D189, E189, F#189, G189, A189, B189, C190, D190, E190, F#190, G190, A190, B190, C191, D191, E191, F#191, G191, A191, B191, C192, D192, E192, F#192, G192, A192, B192, C193, D193, E193, F#193, G193, A193, B193, C194, D194, E194, F#194, G194, A194, B194, C195, D195, E195, F#195, G195, A195, B195, C196, D196, E196, F#196, G196, A196, B196, C197, D197, E197, F#197, G197, A197, B197, C198, D198, E198, F#198, G198, A198, B198, C199, D199, E199, F#199, G199, A199, B199, C200, D200, E200, F#200, G200, A200, B200, C201, D201, E201, F#201, G201, A201, B201, C202, D202, E202, F#202, G202, A202, B202, C203, D203, E203, F#203, G203, A203, B203, C204, D204, E204, F#204, G204, A204, B204, C205, D205, E205, F#205, G205, A205, B205, C206, D206, E206, F#206, G206, A206, B206, C207, D207, E207, F#207, G207, A207, B207, C208, D208, E208, F#208, G208, A208, B208, C209, D209, E209, F#209, G209, A209, B209, C210, D210, E210, F#210, G210, A210, B210, C211, D211, E211, F#211, G211, A211, B211, C212, D212, E212, F#212, G212, A212, B212, C213, D213, E213, F#213, G213, A213, B213, C214, D214, E214, F#214, G214, A214, B214, C215, D215, E215, F#215, G215, A215, B215, C216, D216, E216, F#216, G216, A216, B216, C217, D217, E217, F#217, G217, A217, B217, C218, D218, E218, F#218, G218, A218, B218, C219, D219, E219, F#219, G219, A219, B219, C220, D220, E220, F#220, G220, A220, B220, C221, D221, E221, F#221, G221, A221, B221, C222, D222, E222, F#222, G222, A222, B222, C223, D223, E223, F#223, G223, A223, B223, C224, D224, E224, F#224, G224, A224, B224, C225, D225, E225, F#225, G225, A225, B225, C226, D226, E226, F#226, G226, A226, B226, C227, D227, E227, F#227, G227, A227, B227, C228, D228, E228, F#228, G228, A228, B228, C229, D229, E229, F#229, G229, A229, B229, C230, D230, E230, F#230, G230, A230, B230, C231, D231, E231, F#231, G231, A231, B231, C232, D232, E232, F#232, G232, A232, B232, C233, D233, E233, F#233, G233, A233, B233, C234, D234, E234, F#234, G234, A234, B234, C235, D235, E235, F#235, G235, A235, B235, C236, D236, E236, F#236, G236, A236, B236, C237, D237, E237, F#237, G237, A237, B237, C238, D238, E238, F#238, G238, A238, B238, C239, D239, E239, F#239, G239, A239, B239, C240, D240, E240, F#240, G240, A240, B240, C241, D241, E241, F#241, G241, A241, B241, C242, D242, E242, F#242, G242, A242, B242, C243, D243, E243, F#243, G243, A243, B243, C244, D244, E244, F#244, G244, A244, B244, C245, D245, E245, F#245, G245, A245, B245, C246, D246, E246, F#246, G246, A246, B246, C247, D247, E247, F#247, G247, A247, B247, C248, D248, E248, F#248, G248, A248, B248, C249, D249, E249, F#249, G249, A249, B249, C250, D250, E250, F#250, G250, A250, B250, C251, D251, E251, F#251, G251, A251, B251, C252, D252, E252, F#252, G252, A252, B252, C253, D253, E253, F#253, G253, A253, B253, C254, D254, E254, F#254, G254, A254, B254, C255, D255, E255, F#255, G255, A255, B255, C256, D256, E256, F#256, G256, A256, B256, C257, D257, E257, F#257, G257, A257, B257, C258, D258, E258, F#258, G258, A258, B258, C259, D259, E259, F#259, G259, A259, B259, C260, D260, E260, F#260, G260, A260, B260, C261, D261, E261, F#261, G261, A261, B261, C262, D262, E262, F#262, G262, A262, B262, C263, D263, E263, F#263, G263, A263, B263, C264, D264, E264, F#264, G264, A264, B264, C265, D265, E265, F#265, G265, A265, B265, C266, D266, E266, F#266, G266, A266, B266, C267, D267, E267, F#267, G267, A267, B267, C268, D268, E268, F#268, G268, A268, B268, C269, D269, E269, F#269, G269, A269, B269, C270, D270, E270, F#270, G270, A270, B270, C271, D271, E271, F#271, G271, A271, B271, C272, D272, E272, F#272, G272, A272, B272, C273, D273, E273, F#273, G273, A273, B273, C274, D274, E274, F#274, G274, A274, B274, C275, D275, E275, F#275, G275, A275, B275, C276, D276, E276, F#276, G276, A276, B276, C277, D277, E277, F#277, G277, A277, B277, C278, D278, E278, F#278, G278, A278, B278, C279, D279, E279, F#279, G279, A279, B279, C280, D280, E280, F#280, G280, A280, B280, C281, D281, E281, F#281, G281, A281, B281, C282, D282, E282, F#282, G282, A282, B282, C283, D283, E283, F#283, G283, A283, B283, C284, D284, E284, F#284, G284, A284, B284, C285, D285, E285, F#285, G285, A285, B285, C286, D286, E286, F#286, G286, A286, B286, C287, D287, E287, F#287, G287, A287, B287, C288, D288, E288, F#288, G288, A288, B288, C289, D289, E289, F#289, G289, A289, B289, C290, D290, E290, F#290, G290, A290, B290, C291, D291, E291, F#291, G291, A291, B291, C292, D292, E292, F#292, G292, A292, B292, C293, D293, E293, F#293, G293, A293, B293, C294, D294, E294, F#294, G294, A294, B294, C295, D295, E295, F#295, G295, A295, B295, C296, D296, E296, F#296, G296, A296, B296, C297, D297, E297, F#297, G297, A297, B297, C298, D298, E298, F#298, G298, A298, B298, C299, D299, E299, F#299, G299, A299, B299, C300, D300, E300, F#300, G300, A300, B300, C301, D301, E301, F#301, G301, A301, B301, C302, D302, E302, F#302, G302, A302, B302, C303, D303, E303, F#303, G303, A303, B303, C304, D304, E304, F#304, G304, A304, B304, C305, D305, E305, F#305, G305, A305, B305, C306, D306, E306, F#306, G306, A306, B306, C307, D307, E307, F#307, G307, A307, B307, C308, D308, E308, F#308, G308, A308, B308, C309, D309, E309, F#309, G309, A309, B309, C310, D310, E310, F#310, G310, A310, B310, C311, D311, E311, F#311, G311, A311, B311, C312, D312, E312, F#312, G312, A312, B312, C313, D313, E313, F#313, G313, A313, B313, C314, D314, E314, F#314, G314, A314, B314, C315, D315, E315, F#315, G315, A315, B315, C316, D316, E316, F#316, G316, A316, B316, C317, D317, E317, F#317, G317, A317, B317, C318, D318, E318, F#318, G318, A318, B318, C319, D319, E319, F#319, G319, A319, B319, C320, D320, E320, F#320, G320, A320, B320, C321, D321, E321, F#321, G321, A321, B321, C322, D322, E322, F#322, G322, A322, B322, C323, D323, E323, F#323, G323, A323, B323, C324, D324, E324, F#324, G324, A324, B324, C325, D325, E325, F#325, G325, A325, B325, C326, D326, E326, F#326, G326, A326, B326, C327, D327, E327, F#327, G327, A327, B327, C328, D328, E328, F#328, G328, A328, B328, C329, D329, E329, F#329, G329, A329, B329, C330, D330, E330, F#330, G330, A330, B330, C331, D331, E331, F#331, G331, A331, B331, C332, D332, E332, F#332, G332, A332, B332, C333, D333, E333, F#333, G333, A333, B333, C334, D334, E334, F#334, G334, A334, B334, C335, D335, E335, F#335, G335, A335, B335, C336, D336, E336, F#336, G336, A336, B336, C337, D337, E337, F#337, G337, A337, B337, C338, D338, E338, F#338, G338, A338, B338, C339, D339, E339, F#339, G339, A339, B339, C340, D340, E340, F#340, G340, A340, B340, C341, D341, E341, F#341, G341, A341, B341, C342, D342, E342, F#342, G342, A342, B342, C343, D343, E343, F#343, G343, A343, B343, C344, D344, E344, F#344, G344, A344, B344, C345, D345, E345, F#345, G345, A345, B345, C346, D346, E346, F#346, G346, A346, B346, C347, D347, E347, F#347, G347, A347, B347, C348, D348, E348, F#348, G348, A348, B348, C349, D349, E349, F#349, G349, A349, B349, C350, D350, E350, F#350, G350, A350, B350, C351, D351, E351, F#351, G351, A351, B351, C352, D352, E352, F#352, G352, A352, B352, C353, D353, E353, F#353, G353, A353, B353, C354, D354, E354, F#354, G354, A354, B354, C355, D355, E355, F#355, G355, A355, B355, C356, D356, E356, F#356, G356, A356, B356, C357, D357, E357, F#357, G357, A357, B357, C358, D358, E358, F#358, G358, A358, B358, C359, D359, E359, F#359, G359, A359, B359, C360, D360, E360, F#360, G360, A360, B360, C361, D361, E361, F#361, G361, A361, B361, C362

High School TTB/TBB INTERMEDIATE

UNISON

Musical notation for the Unison section, featuring two staves: Treble (T) and Bass (B). The music is in 8/8 time and consists of eight measures. The melody is written in a single line on each staff, with measure numbers 1 through 8 indicated above the notes.

TWO-PART

Musical notation for the Two-Part section, featuring two staves: Treble (T) and Bass (*B). The music is in 8/8 time and consists of eight measures. The melody is written in a single line on each staff, with measure numbers 1 through 8 indicated above the notes.

THREE-PART (Middle part may sing either T2 or B1)

Musical notation for the Three-Part section, featuring four staves: T1, T2, B1, and B2. The music is in 8/8 time and consists of eight measures. The melody is written in a single line on each staff, with measure numbers 1 through 8 indicated above the notes.

High School TTBB INTERMEDIATE

UNISON

Musical notation for the Unison section. It consists of two staves: Treble (T) and Bass (B). Both staves are in the key of D major (two sharps) and 3/4 time. The melody is written in a unison style. The piece is 8 measures long, with each measure numbered from 1 to 8. The notation includes various note values such as quarter, eighth, and sixteenth notes, along with rests.

TWO-PART

Musical notation for the Two-Part section. It consists of two staves: Treble (T) and Bass (B). Both staves are in the key of D major (two sharps) and 3/4 time. The melody is written in a two-part style. The piece is 8 measures long, with each measure numbered from 1 to 8. The notation includes various note values such as quarter, eighth, and sixteenth notes, along with rests.

FOUR-PART

Musical notation for the Four-Part section. It consists of four staves: Treble 1 (T1), Treble 2 (T2), Bass 1 (B1), and Bass 2 (B2). All staves are in the key of D major (two sharps) and 3/4 time. The melody is written in a four-part style. The piece is 8 measures long, with each measure numbered from 1 to 8. The notation includes various note values such as quarter, eighth, and sixteenth notes, along with rests.

High School SAB INTERMEDIATE

UNISON

Musical notation for Unison SAB, measures 1-8. The score is in 4/4 time with a key signature of one sharp (F#). The melody consists of eighth and quarter notes. The first staff is labeled '1' and the second staff is labeled '2'. Both staves contain the same melody.

TWO-PART

Musical notation for Two-Part SAB, measures 1-8. The score is in 4/4 time with a key signature of one sharp (F#). The first staff is labeled '1' and the second staff is labeled '*2'. The two parts play different melodic lines.

THREE-PART

Musical notation for Three-Part SAB, measures 1-8. The score is in 4/4 time with a key signature of one sharp (F#). The parts are labeled S (Soprano), A (Alto), and B (Bass). Each part has a unique melodic line.

High School SATB INTERMEDIATE

UNISON

Musical notation for the Unison part, consisting of two staves. The top staff is in treble clef and the bottom staff is in bass clef. Both are in the key of D major (two sharps) and 6/8 time. The melody is numbered 1 through 8. The notation includes eighth and quarter notes, rests, and a final double bar line.

TWO-PART

Musical notation for the Two-Part part, consisting of two staves. The top staff is in treble clef and the bottom staff is in bass clef. Both are in the key of D major (two sharps) and 6/8 time. The melody is numbered 1 through 8. The notation includes eighth and quarter notes, rests, and a final double bar line. A *2 is written to the left of the bottom staff.

FOUR-PART

Musical notation for the Four-Part part, consisting of four staves labeled S (Soprano), A (Alto), T (Tenor), and B (Bass). Each staff is in its respective clef (Soprano and Alto in treble, Tenor and Bass in bass) and in the key of D major (two sharps) and 6/8 time. The melody is numbered 1 through 8. The notation includes eighth and quarter notes, rests, and a final double bar line.

High School TWO-PART ADVANCED

May do any of these combinations of two parts: SA, TB, SB, or AT

UNISON

1 *mf* 2 3 4 *mp* 5 6 7 *rit.* 8 *mf*

2 *mf* 2 3 4 *mp* 5 6 7 *rit.* 8 *mf*

TWO-PART

S 1 *mf* 2 3 4 *mp* 5 6 7 *rit.* 8 *mf*

A 1 *mf* 2 3 4 *mp* 5 6 7 *rit.* 8 *mf*

T 1 *mf* 2 3 4 *mp* 5 6 7 *rit.* 8 *mf*

B 1 *mf* 2 3 4 *mp* 5 6 7 *rit.* 8 *mf*

TWO-PART

S 1 *mp* 2 3 4 *mf* 5 6 7 *rit.* 8 *f*

A 1 *mp* 2 3 4 *mf* 5 6 7 *rit.* 8 *f*

T 1 *mp* 2 3 4 *mf* 5 6 7 *rit.* 8 *f*

B 1 *mp* 2 3 4 *mf* 5 6 7 *rit.* 8 *f*

High School SSA ADVANCED

UNISON

Musical score for Unison, Soprano (S) and Alto (A) parts. The score is in 4/4 time and B-flat major. It consists of two staves. The Soprano staff starts with a treble clef and the Alto staff with an alto clef. Both parts are marked with dynamics: *f* (forte) at measure 1, *mf* (mezzo-forte) at measure 4, and *f* at measure 8. The music features a melodic line with eighth and sixteenth notes, including a triplet in measure 3 and a fermata in measure 4. The piece concludes with a final chord in measure 8.

TWO-PART

Musical score for Two-Part, Soprano (S) and Alto (*A) parts. The score is in 4/4 time and B-flat major. It consists of two staves. The Soprano staff starts with a treble clef and the Alto staff with an alto clef. Both parts are marked with dynamics: *f* (forte) at measure 1, *mf* (mezzo-forte) at measure 4, and *f* at measure 8. The music features a melodic line with eighth and sixteenth notes, including a triplet in measure 3 and a fermata in measure 4. The Alto part has a final chord in measure 8.

THREE-PART

Musical score for Three-Part, Soprano (S) and Alto (A) parts. The score is in 4/4 time and B-flat major. It consists of three staves. The top two staves are for Soprano (S) and the bottom staff is for Alto (A). All parts are marked with dynamics: *mp* (mezzo-piano) at measure 1, *mf* (mezzo-forte) at measure 4, and *mp* at measure 8. The music features a melodic line with eighth and sixteenth notes, including a triplet in measure 3 and a fermata in measure 4. The Alto part has a final chord in measure 8.

High School TTB/TBB ADVANCED

UNISON

Musical notation for Unison part, featuring two staves (T and B) in 4/4 time. The melody consists of eight measures, marked with dynamics: 1 *p*, 2, 3 *poco cres.*, 4 *mp*, 5, 6, 7, 8 *p*. The key signature has two flats (Bb and Eb).

TWO-PART

Musical notation for Two-Part part, featuring two staves (T and *B) in 4/4 time. The melody consists of eight measures, marked with dynamics: 1 *p*, 2, 3 *poco cres.*, 4 *mp*, 5, 6, 7, 8 *p*. The key signature has two flats (Bb and Eb).

THREE-PART (Middle part may sing either T2 or B1)

Musical notation for Three-Part part, featuring four staves (T1, T2, B1, B2) in 4/4 time. The melody consists of eight measures, marked with dynamics: 1 *f*, 2, 3, 4 *mf*, 5, 6, 7, 8 *f*. The key signature has two flats (Bb and Eb).

High School TTBB ADVANCED

UNISON

Musical notation for the Unison section, featuring two staves: Tenor (T) and Bass (B). The music is in 4/4 time with a key signature of two flats. The melody consists of eight measures, with dynamics marked as *mf* (measures 1-2), *mp* (measures 3-4), and *p* (measures 5-8). Slurs are placed over measures 3-4 and 7-8.

TWO-PART

Musical notation for the Two-Part section, featuring two staves: Tenor (T) and Bass (*B). The music is in 4/4 time with a key signature of two flats. The melody consists of eight measures, with dynamics marked as *mf* (measures 1-2), *mp* (measures 3-4), and *p* (measures 5-8). Slurs are placed over measures 3-4 and 7-8.

FOUR-PART

Musical notation for the Four-Part section, featuring four staves: Tenor 1 (T1), Tenor 2 (T2), Bass 1 (B1), and Bass 2 (B2). The music is in 4/4 time with a key signature of two flats. The melody consists of eight measures, with dynamics marked as *f* (measures 1-2), *mf* (measures 3-4), and *f* (measures 5-8). Slurs are placed over measures 3-4 and 7-8.

High School SAB ADVANCED

UNISON

1 *p* 2 3 *mp* 4 5 6 7 *mf* 8

2 *p* 2 3 *mp* 4 5 6 7 *mf* 8

Two staves of music in 3/4 time, key of B-flat major. The first staff is labeled '1' and the second '2'. Both start with a piano (*p*) dynamic and end with a mezzo-forte (*mf*) dynamic. The music consists of eighth and quarter notes with slurs and accents.

TWO-PART

1 *p* 2 3 *mp* 4 5 6 7 *mf* 8

*2 *p* 2 3 *mp* 4 5 6 7 *mf* 8

Two staves of music in 3/4 time, key of B-flat major. The first staff is labeled '1' and the second '*2'. Both start with a piano (*p*) dynamic and end with a mezzo-forte (*mf*) dynamic. The music consists of eighth and quarter notes with slurs and accents.

THREE-PART

S *f* 2 3 *mf* 4 5 6 7 *mp* 8

A *f* 2 3 *mf* 4 5 6 7 *mp* 8

B *f* 2 3 *mf* 4 5 6 7 *mp* 8

Three staves of music in 3/4 time, key of B-flat major. The staves are labeled 'S', 'A', and 'B'. All start with a forte (*f*) dynamic and end with a mezzo-piano (*mp*) dynamic. The music consists of eighth and quarter notes with slurs and accents.

High School SATB ADVANCED

UNISON

Musical score for Unison section, consisting of two staves (1 and 2) in 4/4 time. The key signature has three flats. The score includes dynamic markings: *mf* at the beginning, *dim.* at measure 3, *mp* at measure 4, *cresc.* at measure 7, and *mf* at the end. Measures are numbered 1 through 8.

TWO-PART

Musical score for Two-Part section, consisting of two staves (1 and 2) in 4/4 time. The key signature has three flats. The score includes dynamic markings: *mf* at the beginning, *dim.* at measure 3, *mp* at measure 4, *cresc.* at measure 7, and *mf* at the end. Measures are numbered 1 through 8. A star symbol is placed to the left of the first staff.

FOUR-PART

Musical score for Four-Part section, consisting of four staves labeled S (Soprano), A (Alto), T (Tenor), and B (Bass) in 4/4 time. The key signature has three flats. The score includes dynamic markings: *f* at the beginning, *mf* at measure 4, and *f* at the end. Measures are numbered 1 through 8. Slurs are present over measures 3-4 and 7-8.